

Endurant XD Series Automated Transmission TRPB0960 EN-US

May 2025

EXD-16F118D
EXD-18F118D
EXDP-16F118D
EXDP-18F118D
EXDP-20F118D
EXD-18F118D-N



BACKED BY
Roadranger
SUPPORT

General Information

Warnings and Cautions1

How to Use This Manual2

Service Kits and Parts Index3

Service Parts and Kits

OEM and Engine Specific Kits7

Main Housing Service Kits16

Intermediate Housing Service Kits41

Rear Housing Service Parts and Kits45

Appendix

Change Log52

Warnings and Cautions

The alert symbols, signal words (**DANGER**, **WARNING** and **CAUTION**) and statements throughout this manual indicate the potential severity of a situation. Ensure to read, understand and follow each statement to avoid vehicle damage, component damage, personal injury, severe injury and/or death.



DANGER: Indicates an immediate hazard. Failure to follow the indicated procedures will cause major vehicle component damage, severe injury or death.



WARNING: Indicates an immediate hazard. Failure to follow the indicated procedures may result in major vehicle component damage, severe injury or death.



CAUTION: Indicates a potential hazard. Failure to follow the indicated procedures could result in minor or moderate component damage and/or personal injury.

The NOTICE and Note statements throughout this manual provide additional details required to avoid damaging a component or incorrectly completing a repair. Ensure to read, understand and follow each statement to properly complete a repair.

NOTICE: Indicates component or property damage could result if you do not follow the indicated procedure.

Note: Indicates additional detail that will aid in the repair of a component.

This manual is for transmission service parts and kits identification. Refer to Endurant XD Service Manual TRSM0960 for the appropriate service procedure.



CAUTION: Reference Endurant XD Service Manual TRSM0960 for the appropriate Service Procedure. Failure to follow the appropriate Service Procedure may result in component damage and/or personal injury.

NOTICE: Always reference the latest electronic version of this document to ensure accurate service information.

How to Use This Manual

This manual is divided into four sections: General Information, Transmission Identification, Service Parts and Kits, and Appendix.



CAUTION: Reference Endurant XD Service Manual TRSM0960 for the appropriate Service Procedure. Failure to follow the appropriate Service Procedure may result in component damage and/or personal injury.

NOTICE: Always reference the latest electronic version of this document to ensure accurate service information.

General Information

This section contains basic chapters such as Warnings and Cautions and How to Use This Manual

Transmission Identification

This section provides instruction on how to find and identify the transmission model and serial number.



CAUTION: Record transmission model and serial number prior to identifying the service part and/or kit. Failure to select the correct part based on transmission model number and/or serial number may result in improper repair, and possible transmission and/or engine component damage.

Service Parts and Kits

The Service Parts and Kits are divided in four sections; OEM and Engine Specific Kits (Clutch, Input Shaft and Service Units), Main Housing, Intermediate Housing and Rear Housing. A Component Identification diagram is included with each part or kit.

To find the information you need, simply identify the transmission model and the section of the transmission being worked on, refer to the Service Parts and Kits Index, turn to the page specified and identify the part or kit number.

Appendix

This section contains additional details that support the service of the transmission.

Service Kits and Parts Index

OEM and Engine Specific Transmission Kits

Description	Page
Clutch Service Kits	page 7
Input Shaft Kit Part Identification	page 11
Input Shaft Kits	page 13
Transmission Service Units	page 14

Main Housing

Description	Part Number	Page
8-Bolt PTO Cover Kit	K-4534	page 30
Anaerobic Sealant (50 ML / 1.69 Oz.)	5564561	page 25
Countershaft Bearing Kit	K-4584	page 33
Drive Gear - Front Small Parts Kit	K-4674	page 36
Drive Gear - Rear Small Parts Kit	K-4675	page 36
Fluid Pressure Sensor Kit	K-4387	page 44
Front Snap Ring Kit	K-4582	page 22
Inertia Brake Air Line Assembly	S-3253	page 20
Inertia Brake Air Line Fitting	10001240	page 21
Inertia Brake Cover Cap Screw	10001813-MP6	page 20
Inertia Brake Housing	K-4670	page 20
Inertia Brake Housing Cap Screw	10001814-MP10	page 20
Inertia Brake Kit	K-4554	page 19
Input Shaft Bearing Kit	K-4540	page 33
Input Shaft Cover Cap Screw	10001814-MP10	page 17
Input Shaft Cover Kit	S-3259	page 17
Linear Clutch Actuator (LCA) Kit	K-4576	page 26
Linear Clutch Actuator (LCA) Cap Screws	X-8-0847M-MP4	page 27
Main Housing Cap Screw	X-8F-1051M-MP28	page 35
Main Housing Inspection Cover	10001202	page 21
Main Housing Seal Kit	K-4552	page 17
Main Housing Kit	K-4533	page 30
Main Shaft Selective Washer Kit	K-4586	page 31

Main Housing

Description	Part Number	Page
Mechatronic Transmission Module (MTM) Kit	See Table	page 24
MTM Air Pressure Sensor	10005053	page 28
MTM Cap Screw (M10X1.5X35)	10001179- MP20	page 29
MTM Cap Screw, Long (M10X1.5X60)	10001222-MP4	page 29
MTM Cap Screw, Special (M10X1.5X38 & M8X1.25X13)	10001815-MP4	page 29
MTM Top Cover Seal	10005055	page 28
MTM Top Cover Cap Screws	10005056-MP4	page 29
PTO Drive Shaft Kit	K-4589	page 40
PTO Pillow Block Assembly	A-10004610	page 38
PTO Pillow Block Cap Screws	X-8-1213M-MP4	page 39
Rail A Shift Yoke Cover	K-4581	page 21
Rail B Synchronizer Parts Kit	K-4673	page 37
Release Yoke Assembly Kit	K-4553	page 16
Release Yoke Inspection Cover Kit	K-4535	page 22
Release Yoke Pivot Pin	10003575	page 16
Transmission Control Module Kit	See Table	page 23
TCM Cover	4307675	page 25
TCM Mounting Stud	5577511-MP4	page 25
Upper & Lower Countershaft Kit	K-4536	page 35
Upper Countershaft Cover	K-4671	page 18
Upper Countershaft Cover Cap Screw	10001814-MP10	page 18

Intermediate Housing Service Kits

Description	Part Number	Page
Breather	4304602	page 43

Intermediate Housing Service Kits

Description	Part Number	Page
Oil Cooler Bypass Cartridge Kit	K-4541 (International Motors - JIC) K-4662 (PACCAR - JIC) K-4662-PAC (PACCAR - JIC) K-4542 (DTNA - Quick Disconnect) K-4697 (DTNA - VOSS O-Ring)	page 43
Countershaft Bearing Kit	K-4584	page 41
Fluid Pressure Sensor Kit	K-4387	page 44
Intermediate Housing	S-3258	page 41
Oil Pump Assembly	A-10004610	page 42
Reverse Idler Kit	K-4587	page 42

Rear Housing

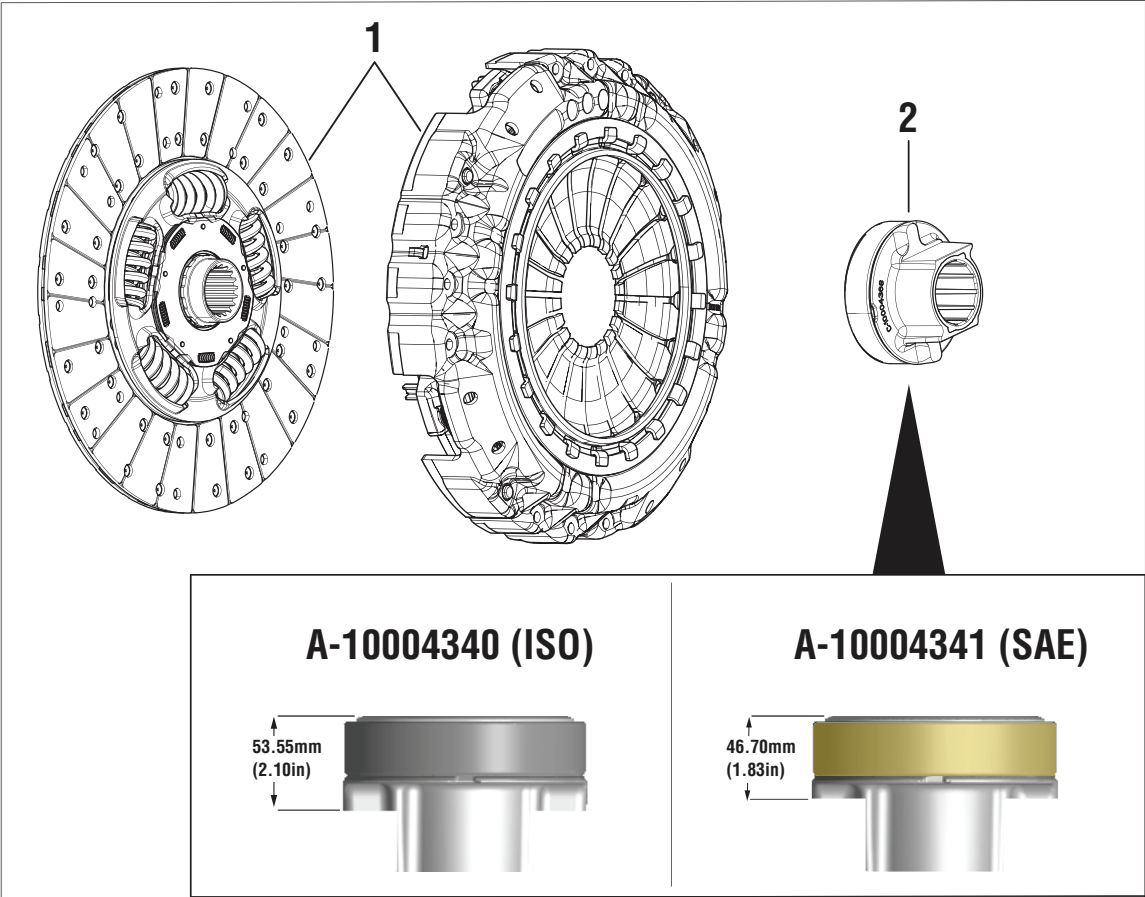
Description	Part Number	Page
Harness Bracket Parts	K-4595	page 46
Output Seal Kit	K-4578	page 45
Output Speed Sensor Kit	K-4381	page 46
Output Yoke Retainer Bolt	10000949	page 45
Output Yoke Retainer Plate	10000950	page 46
Planetary Output Shaft Assembly	K-4593	page 51
Rail A Shift Yoke	S-3267	page 50
Rail E Detent Kit	K-4579	page 49
Rear Bearing Cover Cap Screw	10001172-MP8	page 45
Rear Housing Kit	K-4591	page 47
Rear PTO Cover Kit	K-4577	page 46
Shift Rail E and Yoke	K-4592	page 50

Lubricant, PS-386 HD Synthetic Transmission

Description	Part Number	Page
1 Gallon Jug	5564546-M4	page 51
5 Gallon Pail	5564543	page 51
55 Gallon Drum	5564544	page 51

OEM and Engine Specific Kits

Clutch Service Kits



NOTICE: Endurant XD Series clutch kits will not provide a pilot bearing and must be purchased separately

Pilot Bearing Series	Engine	Eaton Part Number
6306	Cummins ISX12N, X12 and X15/Detroit DD13, DD15, and DD16	5566517
5206	International Motors A26	5566518
6206	PACCAR MX11, MX13, PX9 / Cummins L9	5566516

NOTICE: Endurant XD Series specifications require that the pilot bearing shall be capable of withstanding operating temperature up to 160 degrees C.

K-4544CL (SAE / XD up to 1850 lb-ft. with 260mm Flywheel Bore Engines).

- Freightliner / DTNA - Cummins Engines
- Western Star - Cummins Engines
- Volvo - Cummins engine
- Pilot Bearing Sold Separately

	Description	P/N	QTY
1	Driven Disc Assembly and Clutch Cover (NSS)	105511-5 (Soft Rate Dampener)	1
2	Release Bearing Assembly	A-10004341	1

K-4545CL (ISO / XD up to 1850 lb-ft. with 260mm Flywheel Bore Engines).

- PACCAR Cummins Engine
- International Motors Cummins Engine
- International Motors A26 Engine
- Pilot Bearing Sold Separately
- Kenworth Australia PACCAR MX-13 e5 Engine

	Description	P/N	QTY
1	Driven Disc Assembly and Clutch Cover (NSS)	105511-5 (Soft Rate Dampener)	1
2	Release Bearing Assembly	A-10004340	1

K-4557CL (SAE High Temp / High Torque XD PRO Extreme duty up to 2050 lb-ft. with 260mm Flywheel Bore Engines).

- Freightliner / DTNA Cummins Engine
- Western Star Cummins Engine
- Volvo Cummins Engine
- Kenworth Australia Cummins Engine
- Pilot Bearing Sold Separately

	Description	P/N	QTY
1	Driven Disc Assembly and Clutch Cover (NSS)	105551-CL-65 (Standard Dampener)	1
2	Release Bearing Assembly	A-10004341	1

K-4558CL (ISO High Temp / XD PRO Extreme duty up to 2050 lb-ft. with 260mm Flywheel Bore Engines).

- PACCAR Cummins Engine
- International Motors Cummins Engine
- Pilot Bearing Sold Separately

	Description	P/N	QTY
1	Driven Disc Assembly and Clutch Cover (NSS)	105551-CL-65 (Standard Dampener)	1
2	Release Bearing Assembly	A-10004340	1

K-4559CL (SAE High Temp / XD PRO Extreme duty up to 1850 lb-ft. with 260mm Flywheel Bore Engines).

- Freightliner Cummins Engine
- Kenworth Australia Cummins Engine
- Pilot Bearing Sold Separately

	Description	P/N	QTY
1	Driven Disc Assembly and Clutch Cover (NSS)	105551-CL-70 (Standard Dampener)	1
2	Release Bearing Assembly	A-10004341	1

K-4560CL (ISO / High Temp XD PRO Extreme duty up to 1850 lb-ft. with 260mm Flywheel Bore Engines).

- PACCAR Cummins Engine
- International Motors Cummins Engine
- International Motors A26 Engine
- Pilot Bearing Sold Separately

	Description	P/N	QTY
1	Driven Disc Assembly and Clutch Cover (NSS)	105551-CL-70 (Standard Dampener)	1
2	Release Bearing Assembly	A-10004340	1

K-4561CL / K-4561CL-PAC (ISO / XD up to 1850 lb-ft. with 290mm Flywheel Bore Engines).

- MX11 / MX13
- Pilot Bearing Sold Separately

	Description	P/N	QTY
1	Driven Disc Assembly and Clutch Cover (NSS)	105521-20 (Soft Rate Dampener)	1
2	Release Bearing Assembly	A-10004340	1

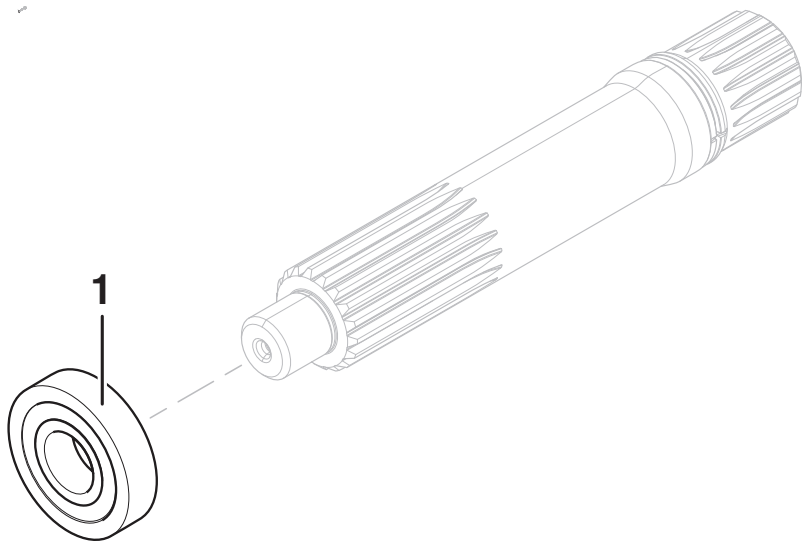
K-4638CL / K-4638CL-PAC (ISO / XD-N / XD PRO Extreme duty up to 2050 lb-ft. with 290mm Flywheel Bore Engines).

- MX11 / MX13
- Cummins X15N (Natural Gas)
- Pilot Bearing Sold Separately

	Description	P/N	QTY
1	Driven Disc Assembly and Clutch Cover (NSS)	105561-CL-60 (Soft Rate Dampener)	1
2	Release Bearing Assembly	A-10004340	1

Pilot Bearings

Use the table below to identify the Pilot Bearing for your engine.



	Engine	Pilot Bearing Series	Part Number
1	PACCAR MX11	6206	5566516
	PACCAR MX13		
	Cummins X12	6306	5566517
	Cummins X15		
	Detroit DD13		
	Detroit DD15		
	Detroit DD16		
	International Motors A26	5206	5566518

Input Shaft Kit Part Number Identification

Use the diagram below to identify the input shaft installed in the transmission and compare to vehicle OEM - Engine.

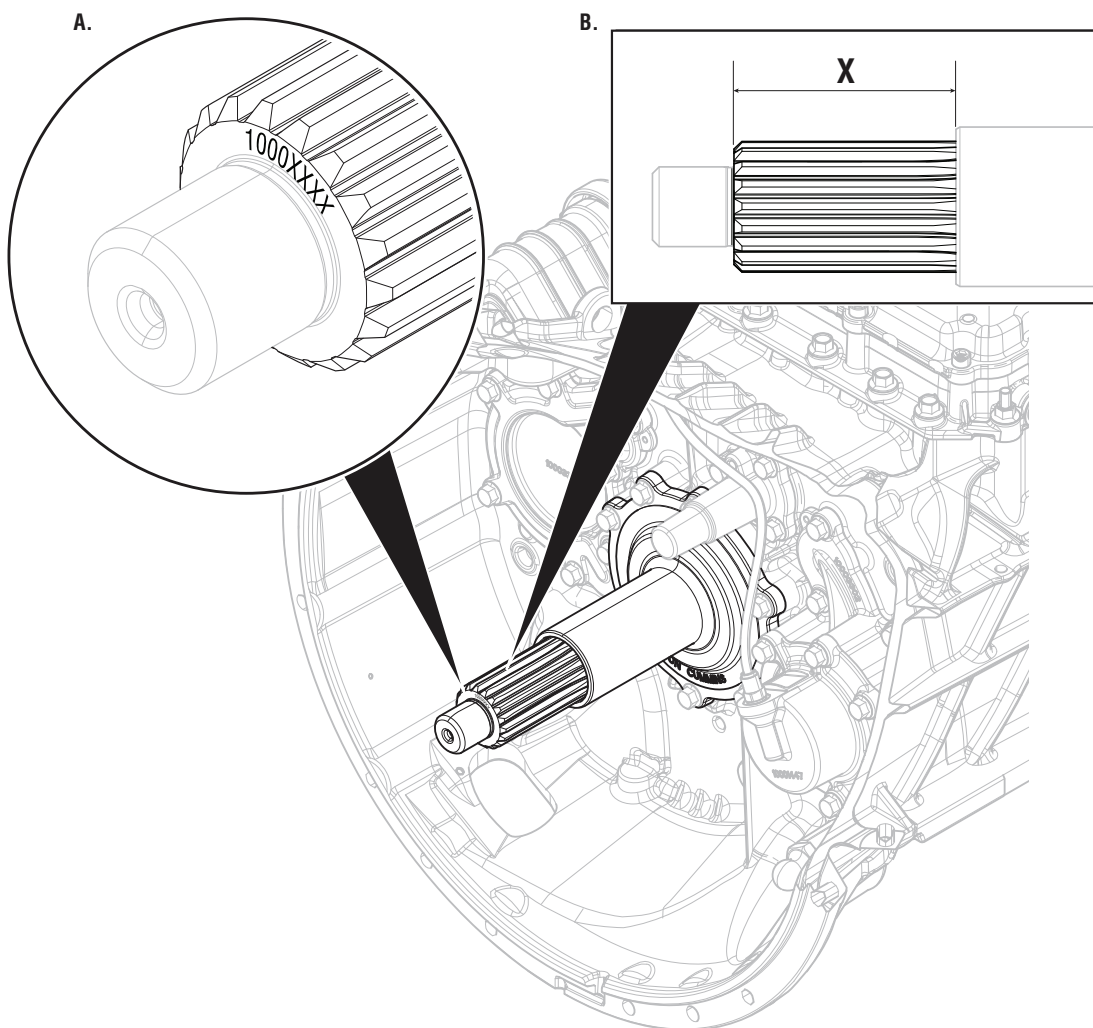
- Locate the part number on the end of the input shaft as shown in Diagram A. Compare input shaft part number and OEM - Engine to determine Kit Part Number in table below, primary identification.
- If part number is illegible - Measure the input shaft as shown in Diagram B. Compare input shaft measurement (X) and OEM Engine to determine Kit Part Number in table below, secondary identification.

NOTICE: For secondary identification, input shaft and cover must be fully assembled in Clutch Housing.

- OEM - Engine



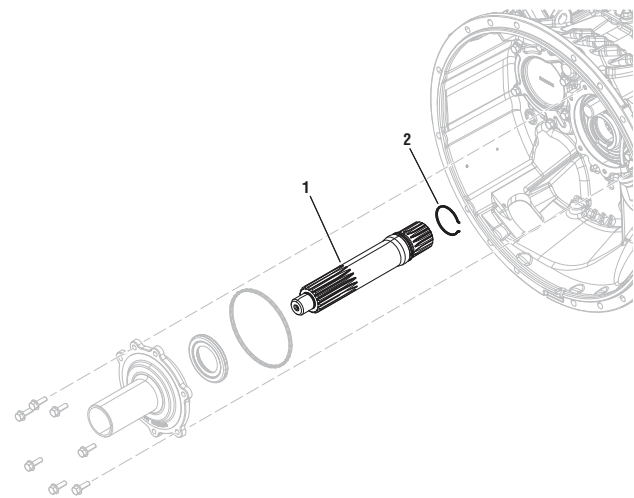
CAUTION: Install the correct input shaft based on the current input shaft installed in the transmission and OEM - Engine. Failure to install the correct input shaft results in non-warrantable engine and/or transmission component damage.



a.	b.	c.		
Primary Identification Part Number	Secondary Identification Measurement	OEM	Engine	Kit Part Number
10003512 (ISO)	82 - 85 mm (3.228 - 3.346 in)	International Motors	A26, International	K-4555
		International Motors	Cummins (Diesel)	
		Kenworth*	Cummins (Diesel)	
		Peterbilt	Cummins (Diesel)	
		Kenworth	MX-11, MX-13 PACCAR	
		Peterbilt	MX-11, MX-13 PACCAR	
		All OEMs	X15N Cummins (Natural Gas)	
10004048 (SAE)	78 - 81 mm (3.070 - 3.188 in)	Freightliner	Cummins (Diesel)	K-4556
		Kenworth - Australia	Cummins (Diesel)	
		Western Star	Cummins (Diesel)	
		Volvo	Cummins (Diesel)	

*Not Australia

Input Shaft Kits



K-4555 (ISO)



CAUTION: Refer to Input Shaft Kit Part Number Identification table to determine Input Shaft Kit part number. Failure to install the correct input shaft results in non-warrantable engine and/or transmission component damage.

	Description	Part Number	QTY
1	Input Shaft	10003512	1
2	Input Shaft Snap Ring	10002982	1

K-4556 (SAE)



CAUTION: Refer to Input Shaft Kit Part Number Identification table to determine Input Shaft Kit part number. Failure to install the correct input shaft results in non-warrantable engine and/or transmission component damage.

	Description	Part Number	QTY
1	Input Shaft	10004048	1
2	Input Shaft Snap Ring	10002982	1

Transmission Service Unit, Part Number Identification

Use the diagram below to identify the Input Shaft installed in your transmission. Verify Input Shaft and OEM - Engine to determine the correct transmission service unit part number.

- Locate the part number of the end of the Input Shaft as shown in Diagram A. Compare input shaft part number to Service Unit Part Number in table below, primary identification.

Note: The additional part number in the primary identification is the assembly part number used in the Bill of Material (BOM).

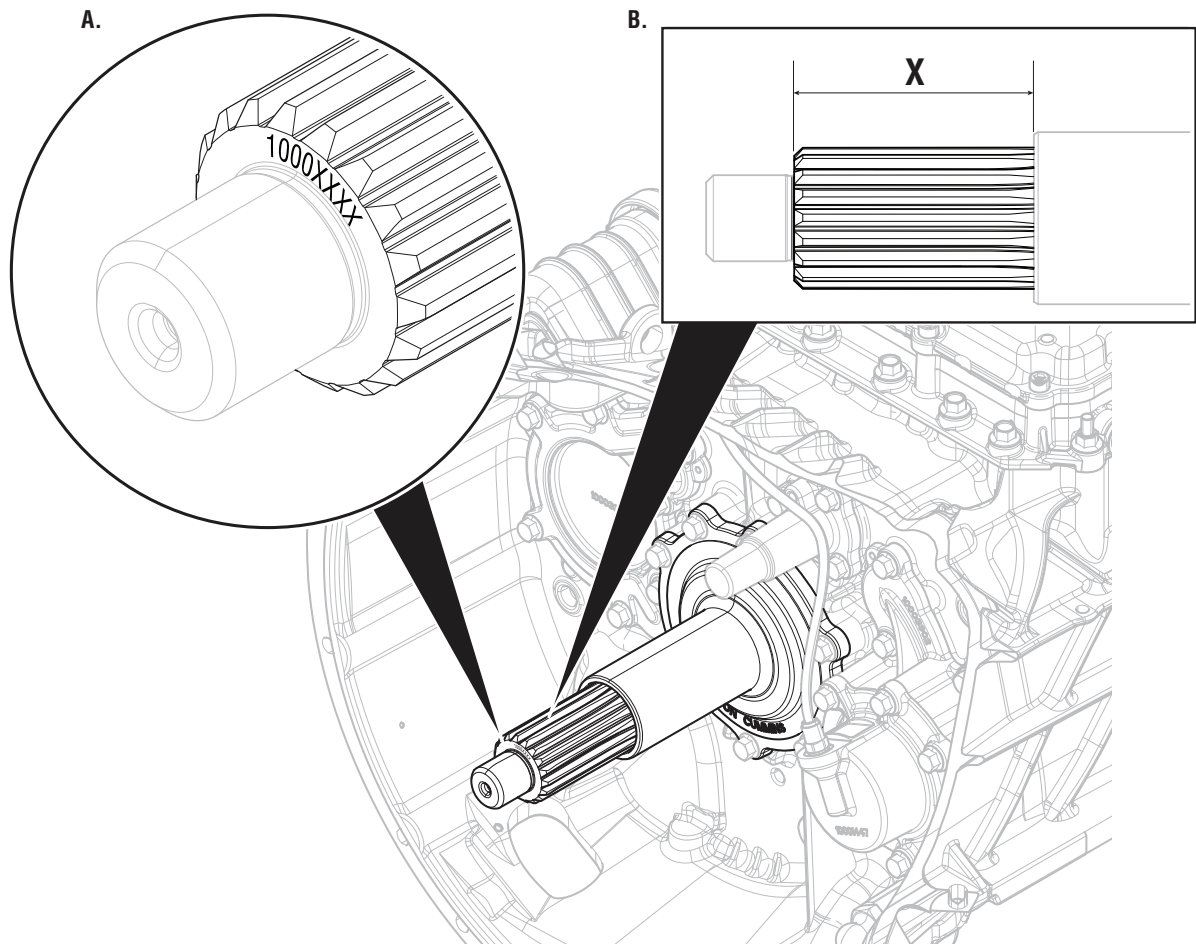
- If part number is illegible - Measure input shaft as shown in Diagram B. Compare input shaft measurement (X) to Service Unit Part Number in table below, secondary identification.

NOTICE: For secondary identification, input shaft and cover must be fully assembled in Main Housing.

- OEM - Engine



CAUTION: Install the correct service unit based on the current input shaft installed in the transmission and OEM - Engine. Failure to install the correct service unit results in non-warrantable engine and/or transmission component damage.

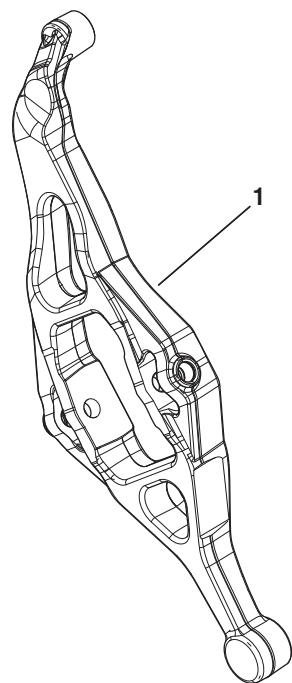


a.	b.	c.		Service Unit (Dual PTO) w/o TCM, MTM	Complete Service Unit (Dual PTO) w/o TCM
Primary Identification Part Number	Secondary Identification Measurement (X)	OEM	Engine		
10003512 (ISO)	82 - 85 mm (3.228 - 3.346 in)	International Motors	A26, International	TN-H23-18X	TA-H23-18X
		International Motors	Cummins (Diesel)		
		Kenworth*	Cummins (Diesel)		
		Peterbilt	Cummins (Diesel)		
		Kenworth	MX-11, MX-13 PACCAR		
		Peterbilt	MX-11, MX-13 PACCAR		
		ALL OEMs	X15N Cummins (Natural Gas)		
10004048 (SAE)	78 - 81 mm (3.070 - 3.188 in)	Freightliner	Cummins (Diesel)	TN-H23-18Y	TA-H23-18Y
		Kenworth - Australia	Cummins (Diesel)		
		Western Star	Cummins (Diesel)		
		Volvo	Cummins (Diesel)		

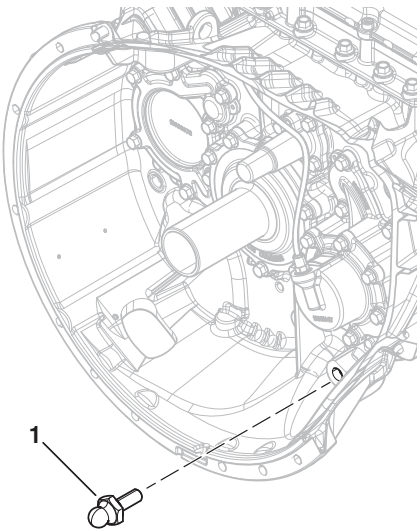
*Not Australia

Main Housing Service Kits

Release Yoke Assembly Kit



Release Yoke Pivot Pin



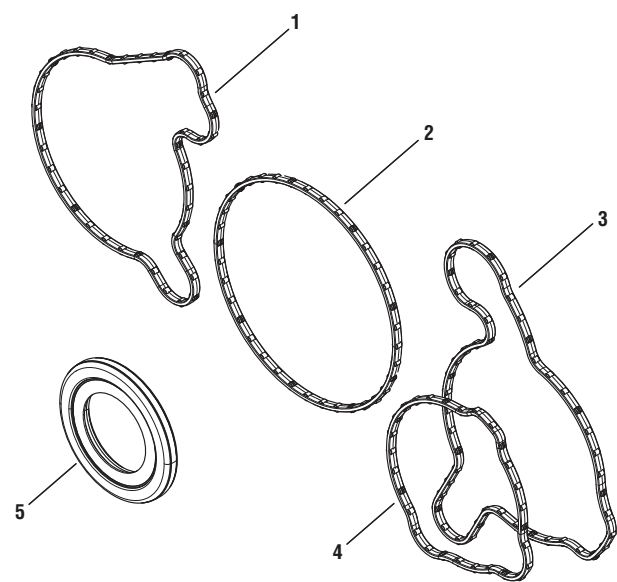
	Description	Part Number	QTY
1	Release Yoke Pivot Pin	10003575	1

K-4553

	Description	Part Number	QTY
1	Release Yoke, Clutch	A-10004349	1

Note: XD Release Yoke follows clutch warranty. Reference TAIB-0998 for clutch component inspection / reuse criteria.

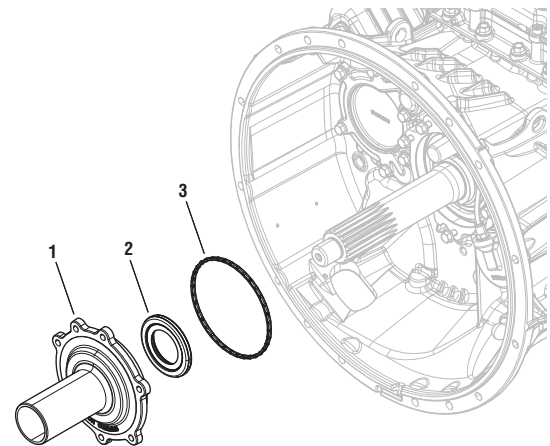
Main Housing Seal Kit



K-4552

	Description	Part Number	QTY
1	Upper Countershaft Seal (NSS)	10003307	1
2	Input Shaft Cover Seal (NSS)	10003304	1
3	Inertia Brake Housing (Rear) Seal (NSS)	10003300	1
4	Inertia Brake Housing (Front) Seal	10003299	1
5	Input Shaft Seal (NSS)	4305625	1

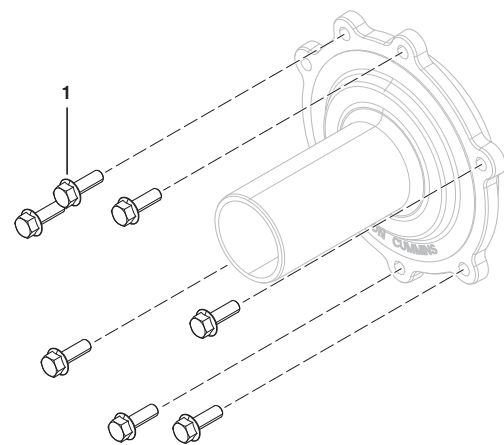
Input Shaft Cover Assembly



S-3259 (Hard Lock Bearing Design)

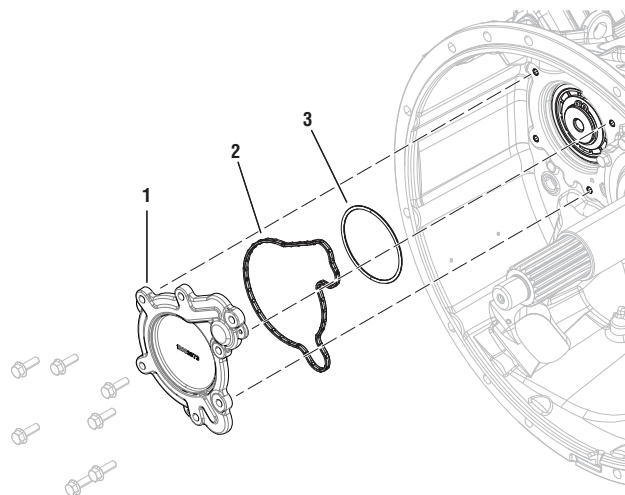
	Description	P/N	QTY
1	Input Shaft Cover (NSS)	A-10004597	1
2	Input Shaft Seal	4305625	1
3	Input Shaft Cover Seal (NSS)	10003304	1

Input Shaft Cover Cap Screw



	Description	P/N	QTY
1	Input Shaft Cover Cap Screw (M8X1.25X25)	10001814-MP10	7

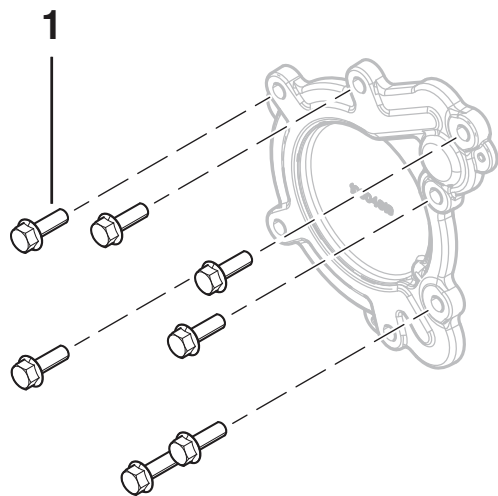
Upper Countershaft Cover Assembly



K-4671 (Hard Lock Bearing Design)

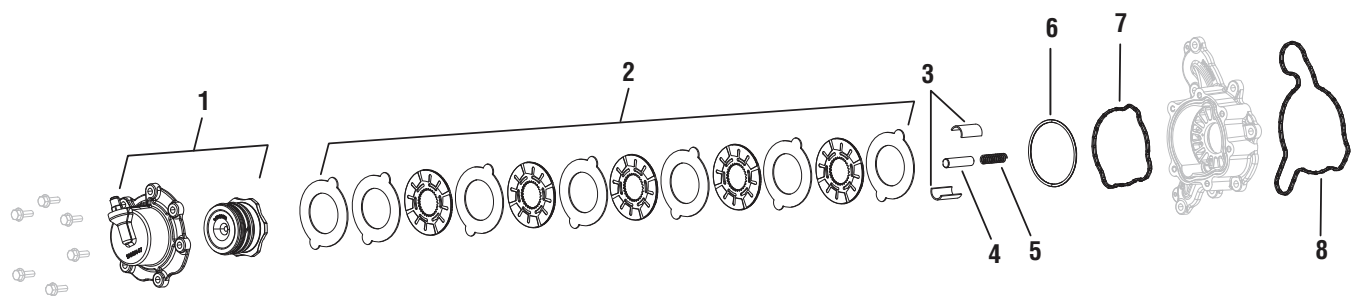
	Description	P/N	QTY
1	Upper Countershaft Cover	A-10004624	1
2	Upper Countershaft Seal (NSS)	10003307	1
3	Upper Countershaft Cover O-ring	10003798	1

Upper Countershaft Cover Cap Screw



	Description	P/N	QTY
1	Upper Countershaft Cover Cap Screw (M8X1.25X25)	10001814-MP10	7

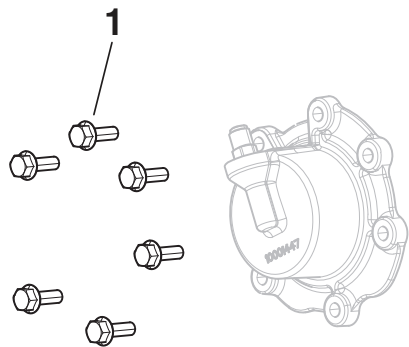
Inertia Brake Kit



K-4554

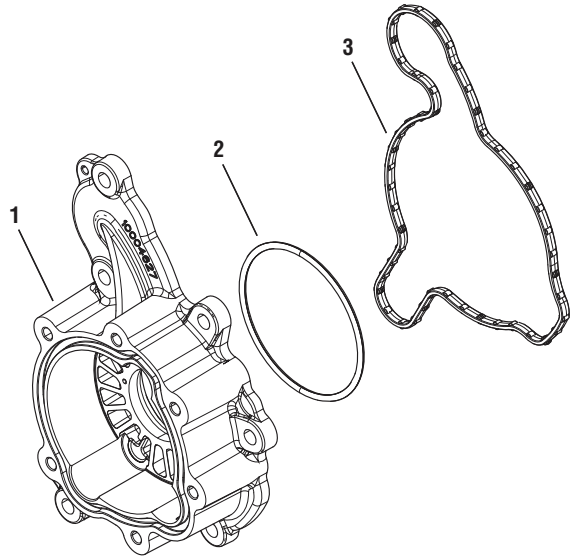
	Description	P/N	QTY			Description	P/N	Qty
1	Inertia Brake Cover and Piston (NSS)	S-3200	1		5	Inertia Brake Return Spring (NSS)	8874897	1
2	Inertia Brake Steel (7) and Friction Discs (5) (NSS)	S-3262	1		6	O-ring	10003798	1
3	Inertia Brake Wear Guides (NSS)	10003523	2		7	Inertia Brake Housing (Front) Seal (NSS)	10003299	1
4	Inertia Brake Piston Pin (NSS)	10000778	1		8	Inertia Brake Housing (Rear) Seal (NSS)	10003300	1

Inertia Brake Cover Cap Screw



	Description	P/N	QTY
1	Inertia Brake Cover Cap Screw (M8X1.25X25)	10001814-MP10	6

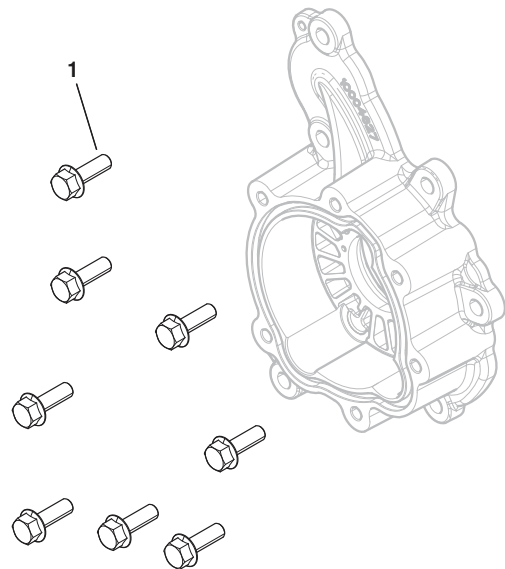
Inertia Brake Housing (Hard Lock Bearing Design)



K-4670

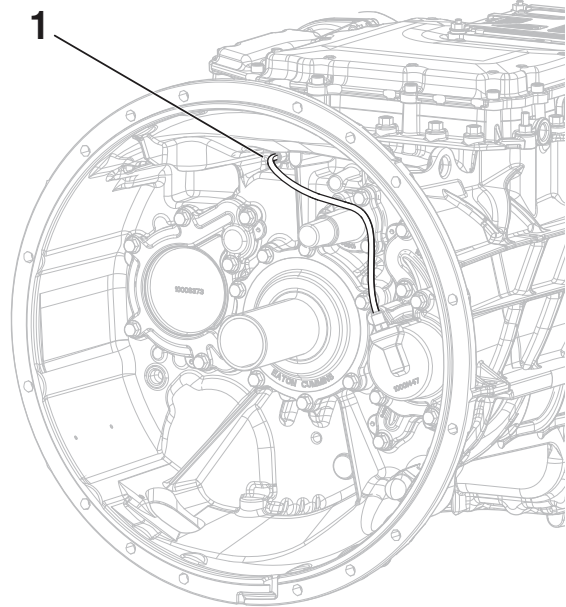
	Description	P/N	QTY
1	Inertia Brake Housing	A-10004628	1
2	Lower Countershaft Cover O-ring	10003798	1
3	Inertia Brake Housing (Rear) Seal	10003300	1

Inertia Brake Housing Cap Screws



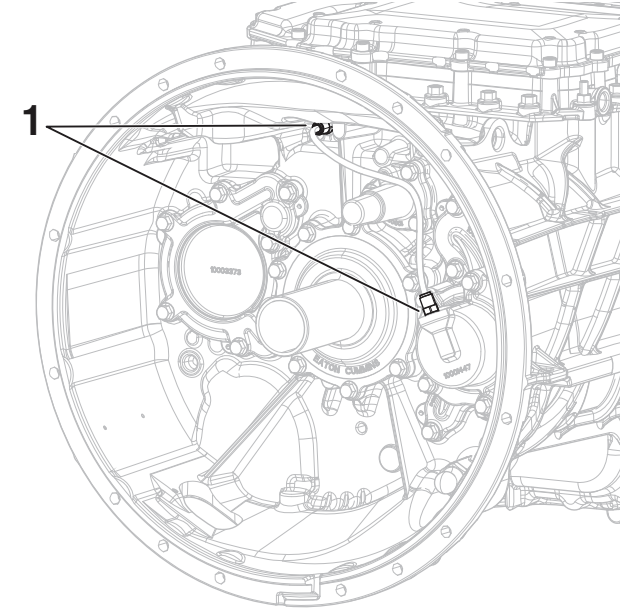
	Description	P/N	QTY
1	Inertia Brake Housing Cap Screw (M8X1.25X25)	10001814-MP10	8

Inertia Brake Air Line Assembly



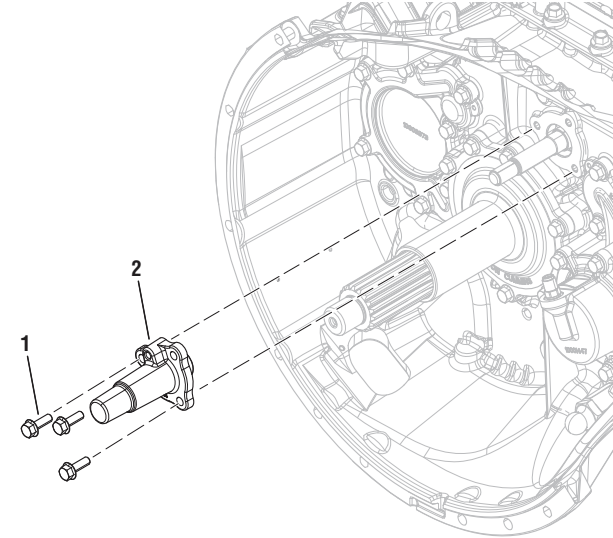
	Description	P/N	QTY
1	Inertia Brake Air Line Assembly	S-3253	1

Inertia Brake Air Line Fitting



	Description	P/N	QTY
1	Inertia Brake Air Line Straight Fitting	10001239	2

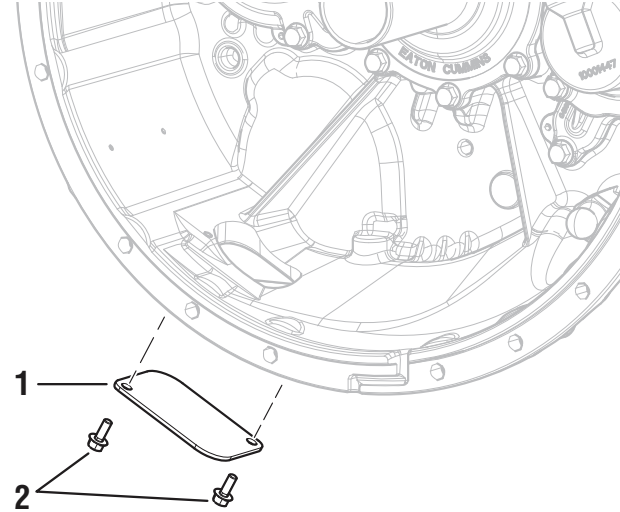
Rail A Shift Yoke Cover



K-4581

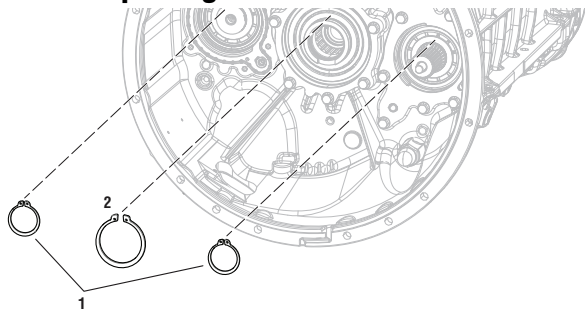
	Description	P/N	QTY
1	Inertia Brake Cover Cap Screw (M8X1.25X25)	10001814-MP10	3
2	Rail A Cover Assembly	S-3256	1

Main Housing Inspection Cover



	Description	P/N	QTY
1	Clutch Housing Inspection Cover	10001202	1
2	Clutch Housing Inspection Cover Cap Screws (M6x1.0x16)	X-8-0625M	2

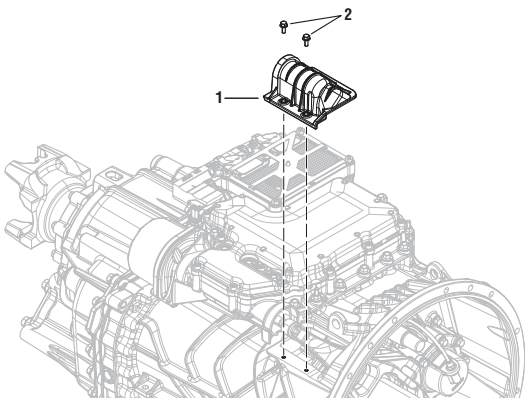
Front Snap Ring Kit



K-4582

	Description	P/N	QTY
1	Countershaft Snap Ring	10003155	2
2	Front Main Shaft Snap Ring	10003175	1

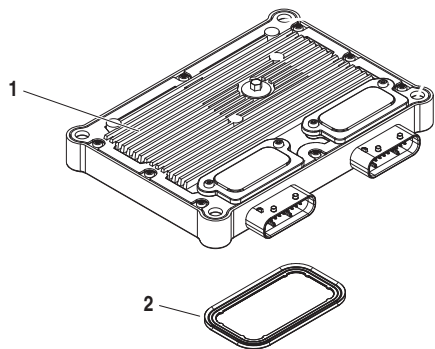
Release Yoke Inspection Cover Kit



K-4535

	Description	Part Number	QTY
1	Release Yoke Inspection Cover Assembly	A-10004414	1
2	Release Yoke Housing Inspection Cover Cap Screws (M6x1.0x16)	X-8-0625M	2

Transmission Control Module (TCM) Kit



	Description	PN	QTY
1	TCM (NSS)	Varies	1
2	TCM Seal	10001587	1

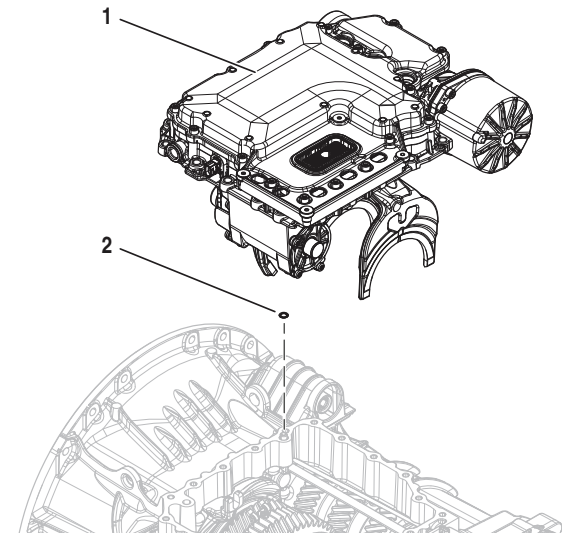
Transmission Control Module (TCM) Kit Part Number Identification

Record Transmission Model Number and compare in table to determine TCM Kit part number.

TCM Part Number	Transmission Model	TCM Kit PN	TCM Kit PN at PACCAR
10003852	EXD-xxF118D	K-4666	K-4666-PAC
	EXDP-xxF118D	K-4668	K-4668-PAC
	PXD-xxF118D		K-4667-PAC
	PXDP-xxF118D		K-4669-PAC

Note: Refer to “New Replacement Transmission Control Module (TCM) Service Procedure” on page 366 in the Endurant XD Service Manual TRSM-0960 for original TCM removal and new replacement TCM installation.

Mechatronic Transmission Module (MTM) Kits

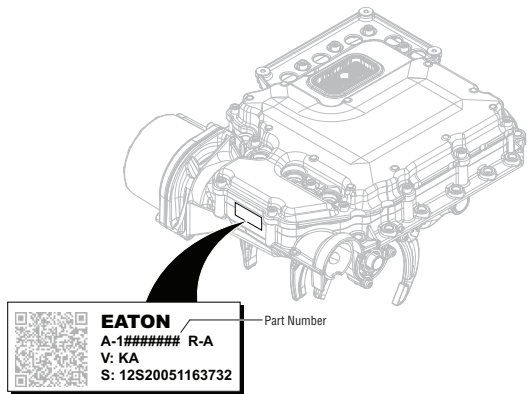


	Description	P/N	QTY
1	MTM (NSS)	Varies	1
2	I-Brake MTM to Main Housing O-ring	13653	1

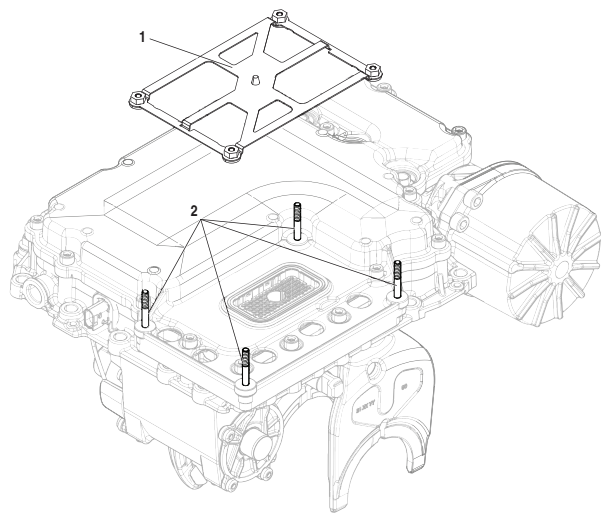
Mechatronic Transmission Module (MTM) Kit Part Number Identification

Record and compare transmission model number in table to determine MTM Kit part number.

MTM Type	MTM Part Number	Transmission Model	MTM Kit PN	MTM Kit PN at PACCAR
PS-490	A-10003241	EXD-xxF118D	K-4566	K-4566-PAC
		EXDP-xxF118D		
	A-10004258	PXD-xxF118D		K-4656-PAC
		PXDP-xxF118D		



TCM Cover and Mounting Stud



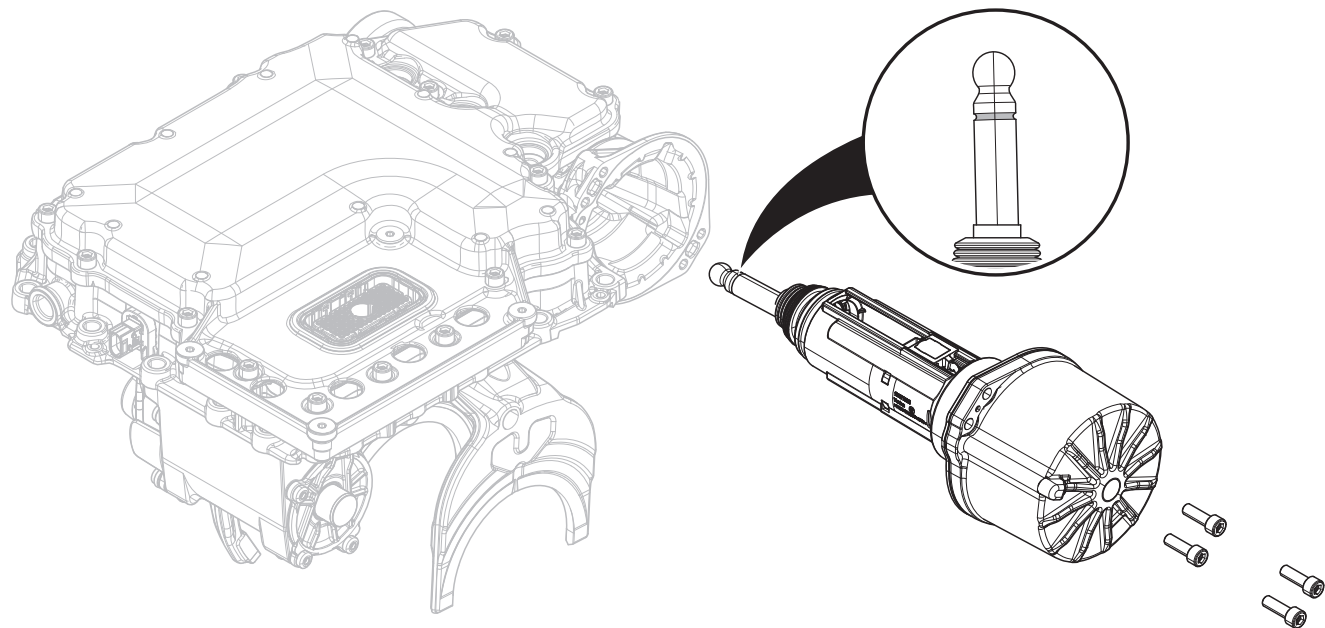
	Description	P/N	QTY
1	TCM Cover	4307675	1
2	TCM Mounting Stud (M6x50.0)	5577511-MP4	4

Sealant



	Description	P/N	QTY
	Anaerobic Sealant (50 ML / 1.69 Oz.)	5564561	1

Linear Clutch Actuator (LCA) Kit

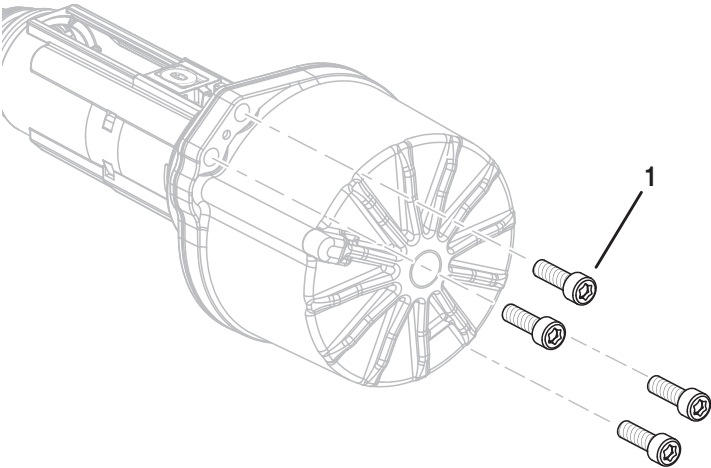


NOTICE: Endurant Family LCA's are product specific. The Endurant XD Series LCA push rod is 30mm longer and can be identified by a groove on the end of the LCA push rod. Improperly installing an Endurant HD Series LCA onto an Endurant XD Series Transmission may result in Fault Code 706 FMI 18 setting Active.

K-4576

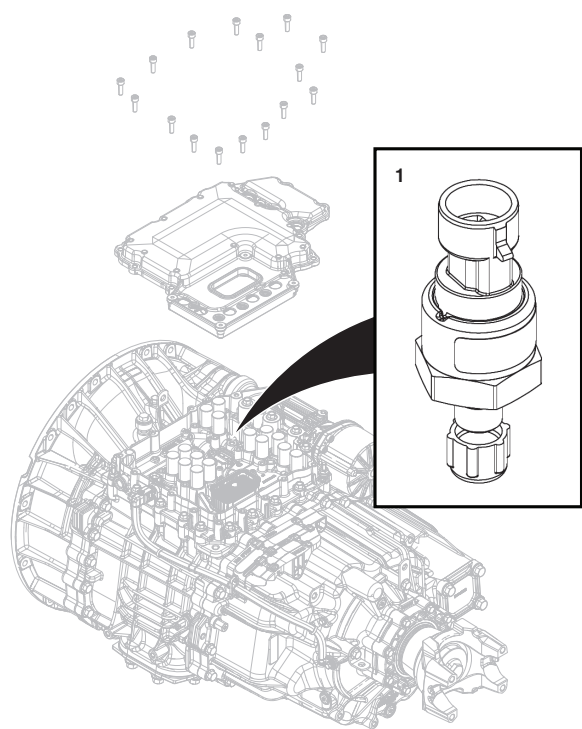
	Description	P/N	QTY
1	LCA	A-10004462	1

LCA Mounting Cap Screws



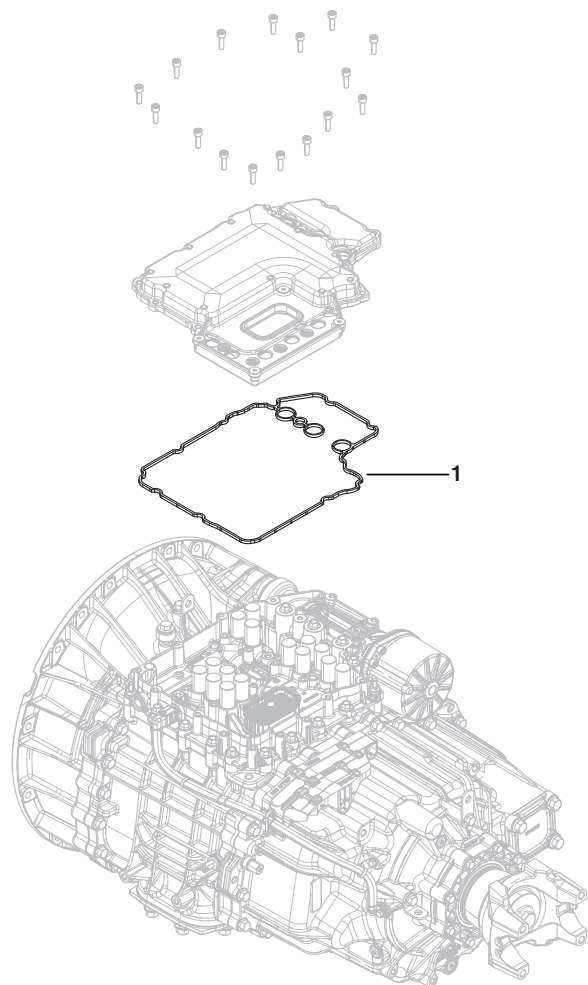
	Description	P/N	QTY
1	LCA Cap Screw (M8 X 1.25 X 30)	X-8-0847M-MP4	4

MTM Air Pressure Sensor



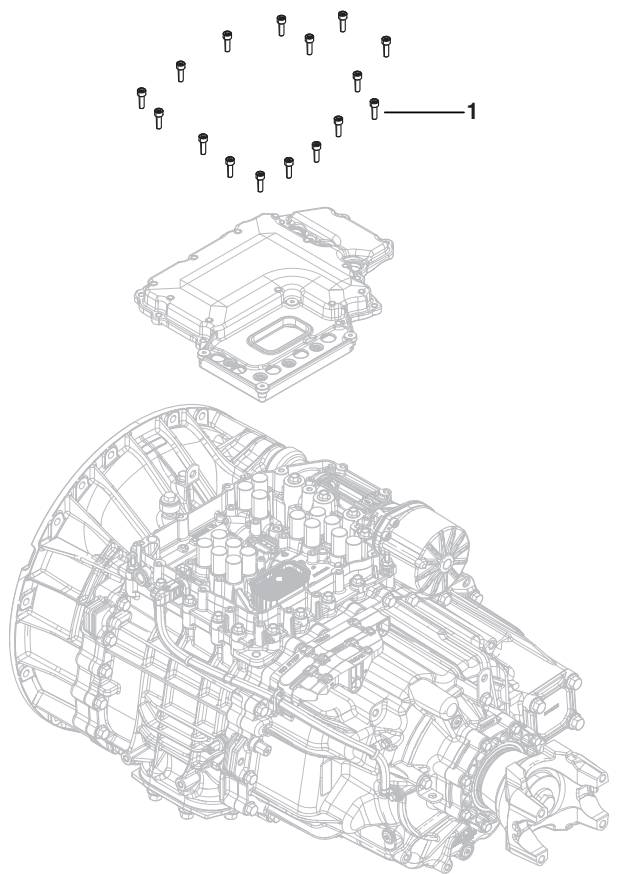
	Description	P/N	QTY
1	Air Pressure Sensor	10005053	1

MTM Top Cover Seal



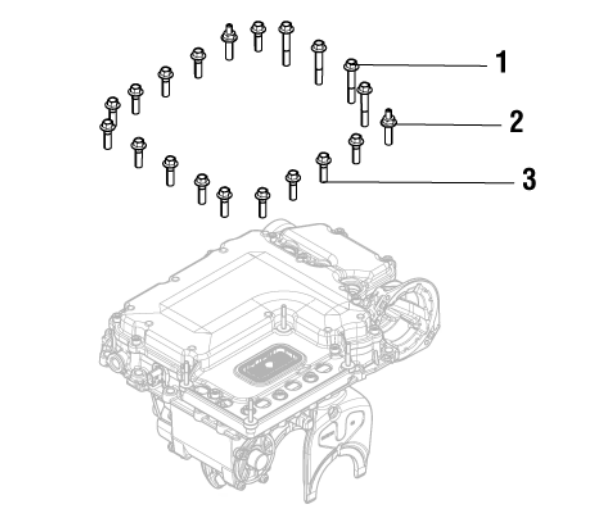
	Description	P/N	QTY
1	MTM Top Cover Seal	10005055	1

MTM Top Cover Cap Screws



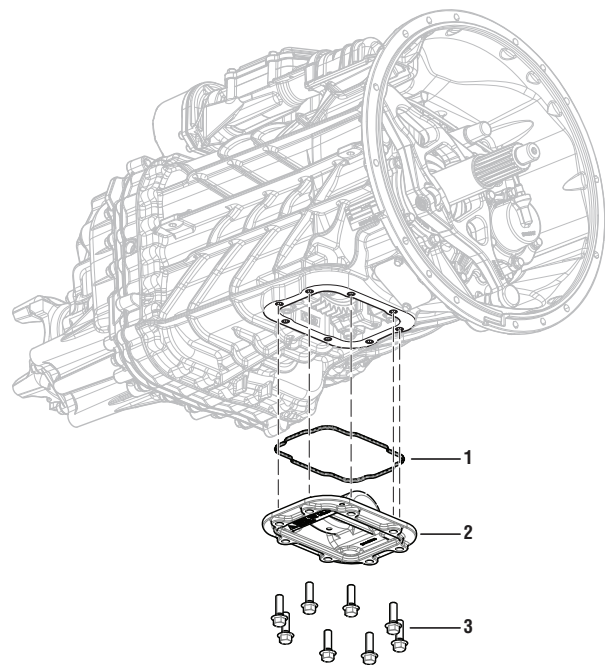
	Description	P/N	QTY
1	MTM Top Cover Cap Screws (M8 x 1.25 x 25)	10005056-MP4	4

MTM Cap Screws



	Description	P/N	QTY
1	MTM Cap Screw, Long (M10X1.5X60)	10001222-MP4	4
2	MTM Cap Screw, Special (M10X1.5X38 & M8X1.25X13)	10001815-MP4	4
3	MTM Cap Screw (M10X1.5X35)	10001179-MP20	12

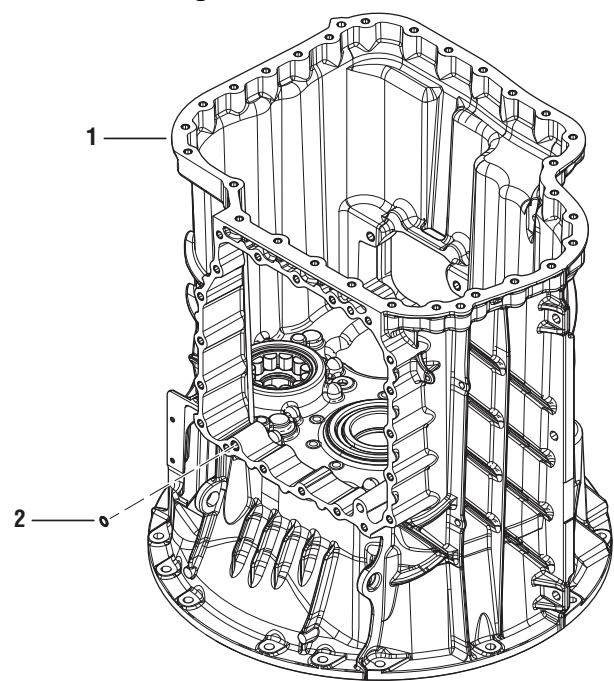
8-Bolt PTO Cover Kit



K-4534

	Description	P/N	QTY
1	PTO Cover Seal	10003598	1
2	8-Bolt PTO Cover	10003508	1
3	PTO Cover Cap Screws (M12x1.75x40)	10001483-MP8	8

Main Housing Kit



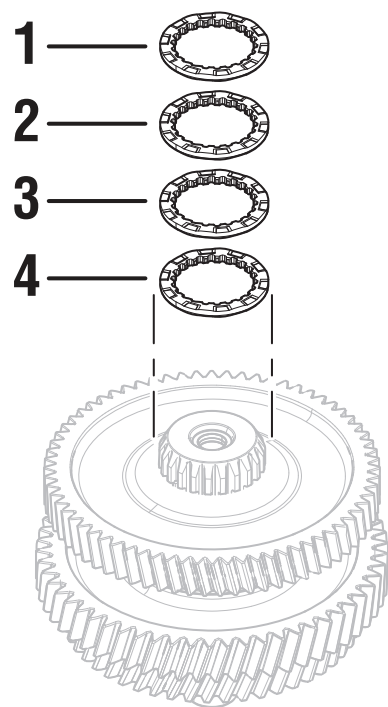
K-4533

	Description	P/N	QTY
1	Main Housing (NSS)	S-3260	1
2	I-Brake MTM to Main Housing O-ring	13653	1
3	8-Bolt PTO Cover O-ring	10003598	1
4	PTO Cover Cap Screws (M12x1.75x40)	10001483-MP8	8

Note: The Main Shaft End-Play procedure is required if the Main Housing is replaced. One of three Main Shaft Selective Washers are required to adjust end-play, Part Numbers: 10003459, 10003460, 10003461, 10003677 found in K-4586 Main Shaft Selective Washer Kit.

Note: S-3260 comes with 10004592 Countershaft Bearings and 10004591 Input Shaft Bearing installed.

Main Shaft Selective Washer Kit



K-4586

	Description	P/N	QTY
1	Main Shaft Washer 6.525 mm (0.257 in)	10003459	1
2	Main Shaft Washer 6.875 mm (0.271 in)	10003460	1
3	Main Shaft Washer 7.225 mm (0.284 in)	10003461	1
4	Main Shaft Washer 7.575 mm (0.298 in)	10003677	1

Note: The Main Shaft End-Play Service Procedure is required if one or more of the following components are replaced:

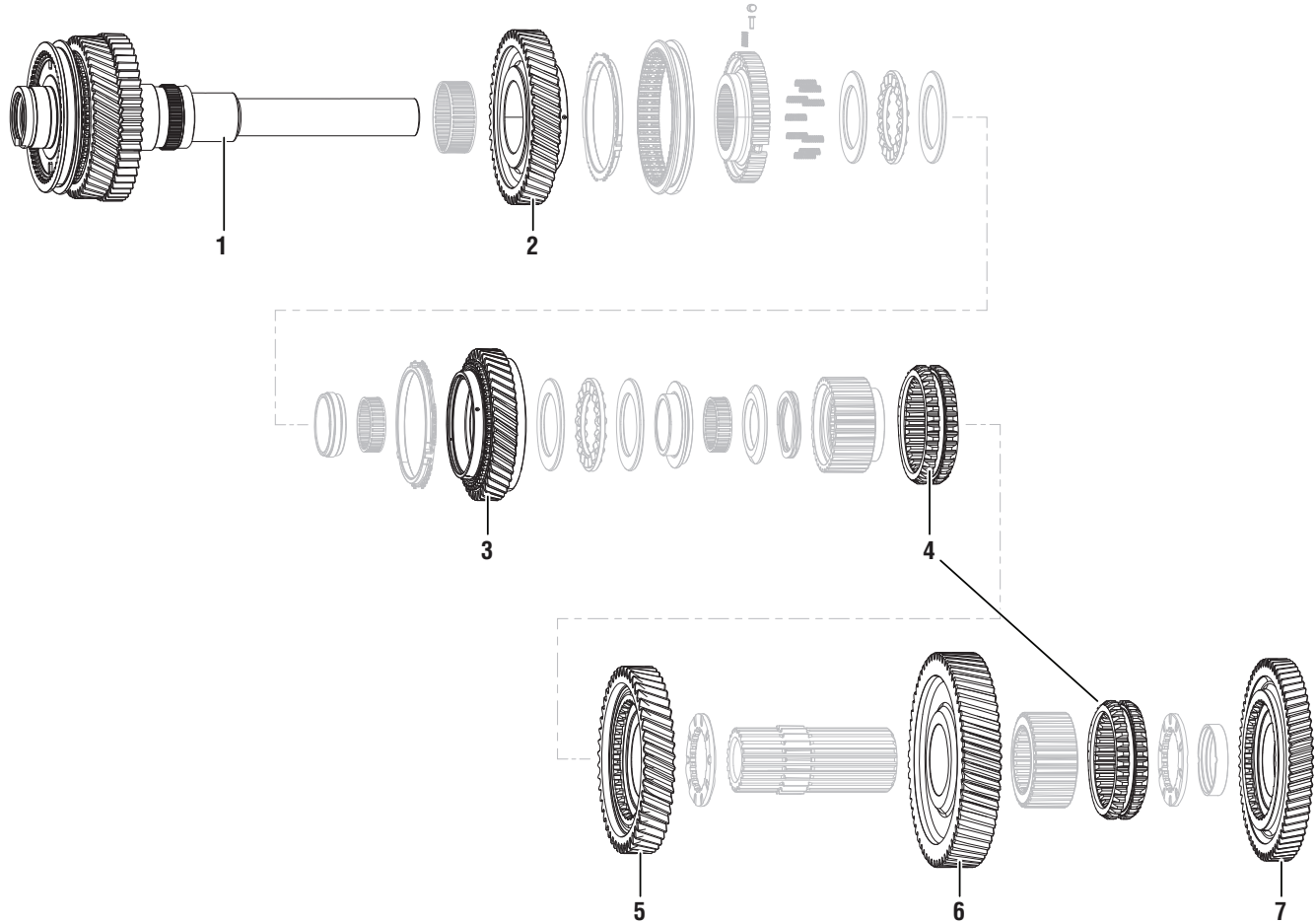
- Intermediate Housing
- Main Housing
- Any Main Shaft Component
- Input Shaft Bearing
- Main Shaft Bearing



CAUTION: Failure to determine and install the Ideal Main Shaft Selective Washer results in incorrect Main Shaft End-Play and transmission component damage.

Main Shaft Components (Misc.)

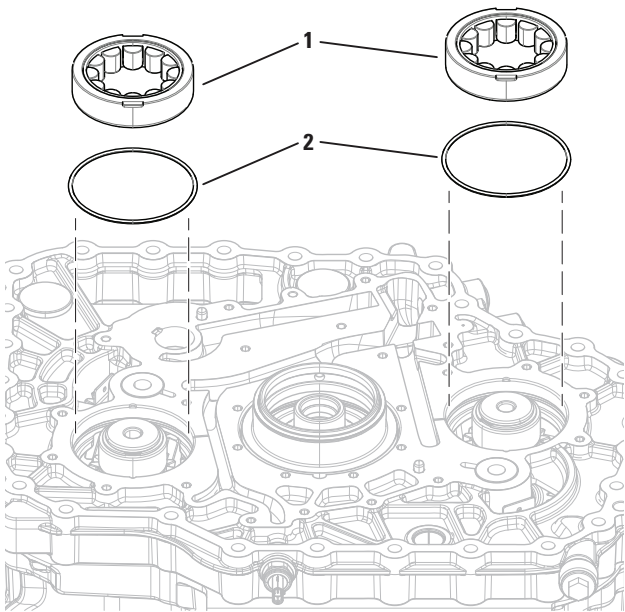
Note: The components shown below are sold as separate parts.



NOTICE: All listed components of the main shaft sold individually, not as a complete kit.

	Description	P/N	QTY		Description	P/N	QTY
1	Extension Shaft Sub-Assembly	S-3269	1	5	2nd Gear (L3)	10004728	1
2	Primary Drive Gear	S-3270	1	6	1st Gear (L4)	10004729	1
3	Splitter Gear	S-3268	1	7	Reverse Gear	10004730	1
4	Sliding Clutch	10004727	1				

Countershaft Bearing Kit

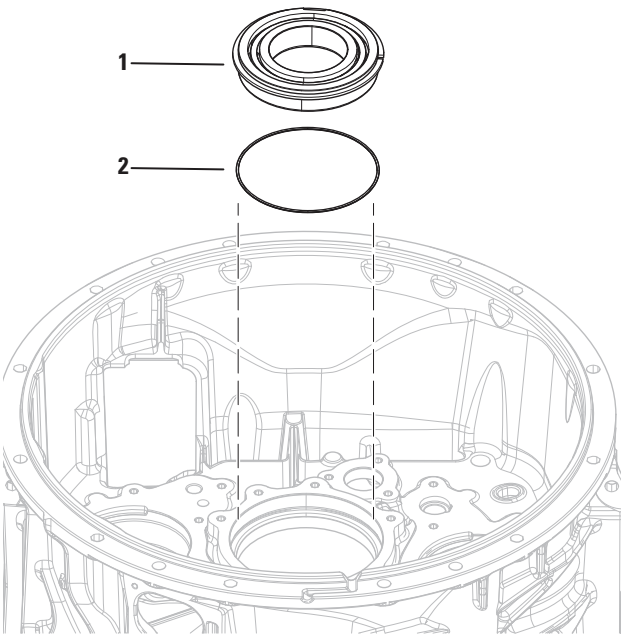


K-4584

	Description	P/N	QTY
1	Countershaft Bearings (NSS)	10004592	2
2	Countershaft Bearing O-rings	10004344	2

Note: Main Housing and Intermediate Housing use the same Countershaft Bearing part numbers. Reference Countershaft Bearing installation procedure for bearing orientation when pressing in new Countershaft Bearings.

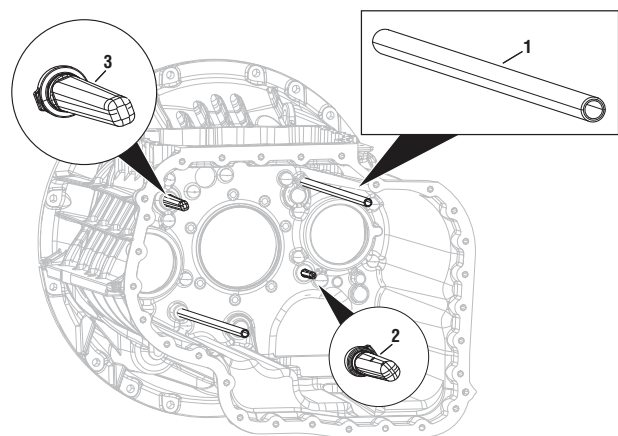
Input Shaft Bearing Kit



K-4540

	Description	P/N	QTY
1	Input Shaft Bearing O-ring	10004632	1
2	Input Shaft Ball Bearing (NSS)	10004591	1

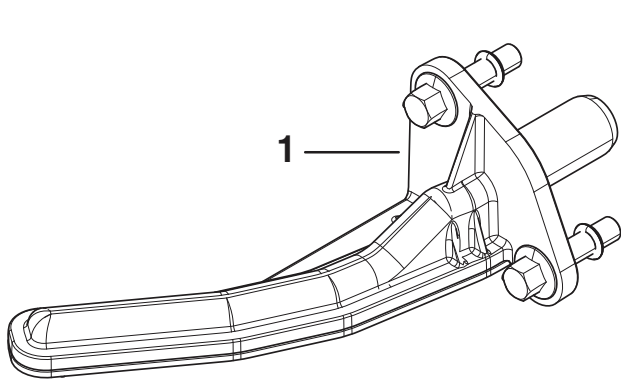
Transfer Oil Tubes



K-4537

	Description	P/N	QTY
1	Transfer Tube	10003408	2
2	Front Lower Lube Tube	10003561	1
3	Front Upper Lube Tube	10003563	1

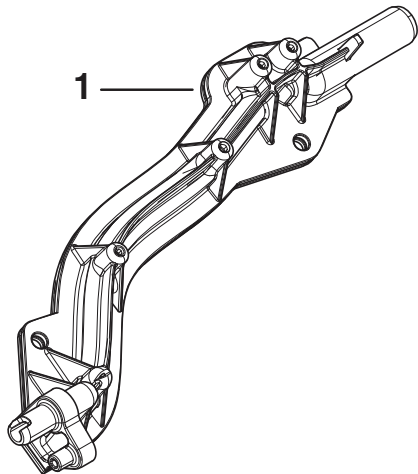
Rear Upper Lube Tube - Welded



K-4539

	Description	P/N	QTY
1	Rear Upper Lube Tube Assembly	A-10003559	1

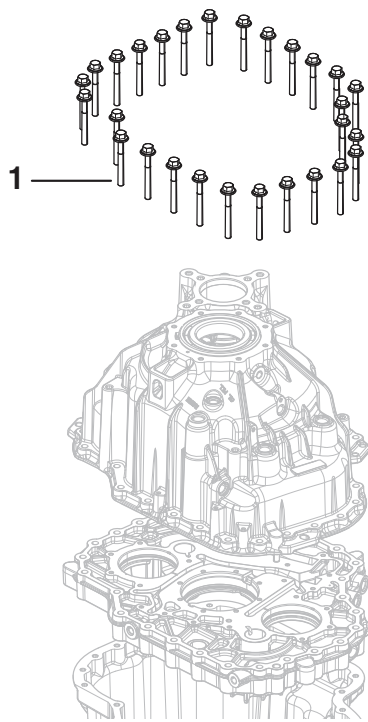
Rear Lower Lube Tube - Welded



K-4538

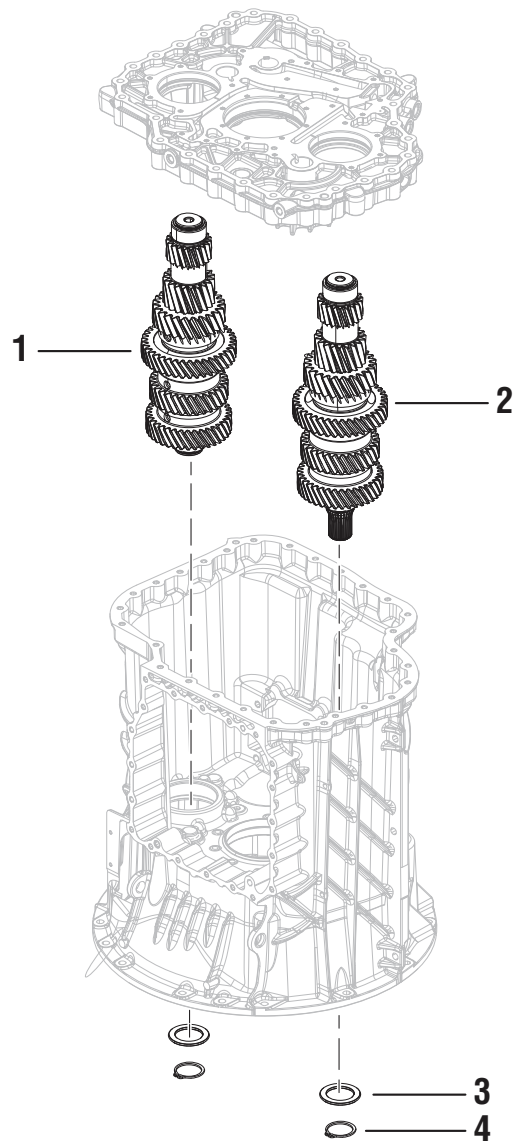
	Description	P/N	QTY
1	Rear Lower Tube Assembly	A-10003555	1

Rear Housing to Main Housing Cap
Screw



	Description	P/N	QTY
1	Main Housing Cap Screws (M10x1.75x40)	X-8F-1051M-MP28	28

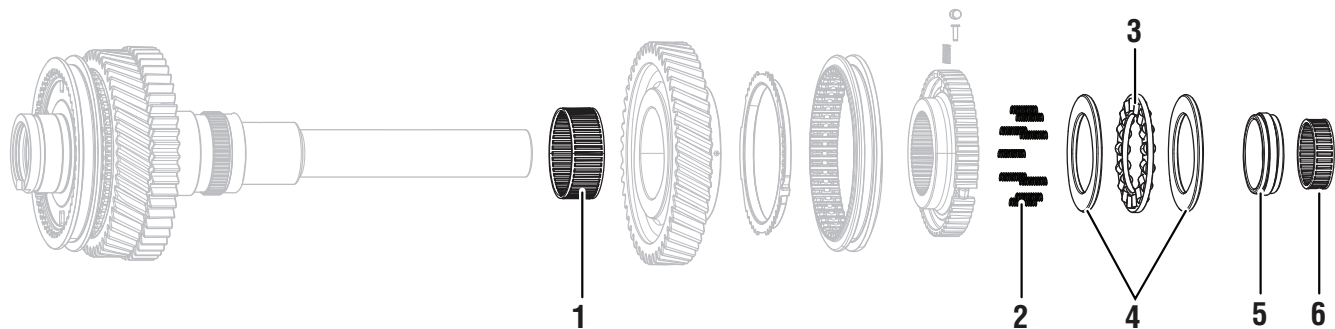
Upper & Lower Countershaft Kit



K-4536

	Description	P/N	QTY
1	Upper Countershaft	S-3226	1
2	Lower Countershaft	S-3227	1
3	Lower and Upper Countershaft Flat Washer	10003156	2
4	Lower and Upper Countershaft Snap Ring	10003155	2

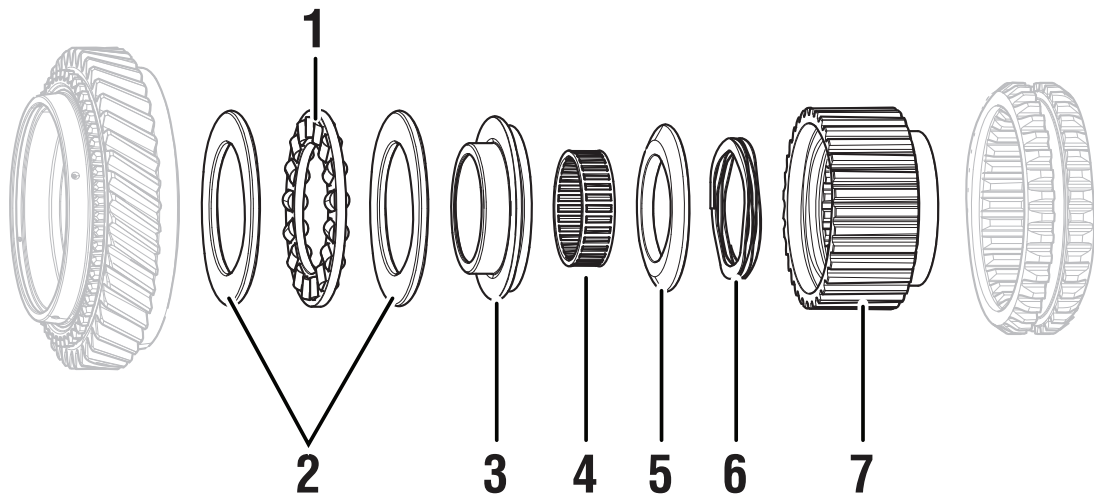
Drive Gear - Front Small Parts Kit



K-4674

	Description	P/N	QTY		Description	P/N	QTY
1	Needle Bearing	10000546	1	4	Thrust Washer	10002967	2
2	Compression Spring	10002974	9	5	Race Thrust Washer	10004659	1
3	Mainshaft Thrust Bearing	10002972	1	6	Needle Roller Bearing	10002977	1

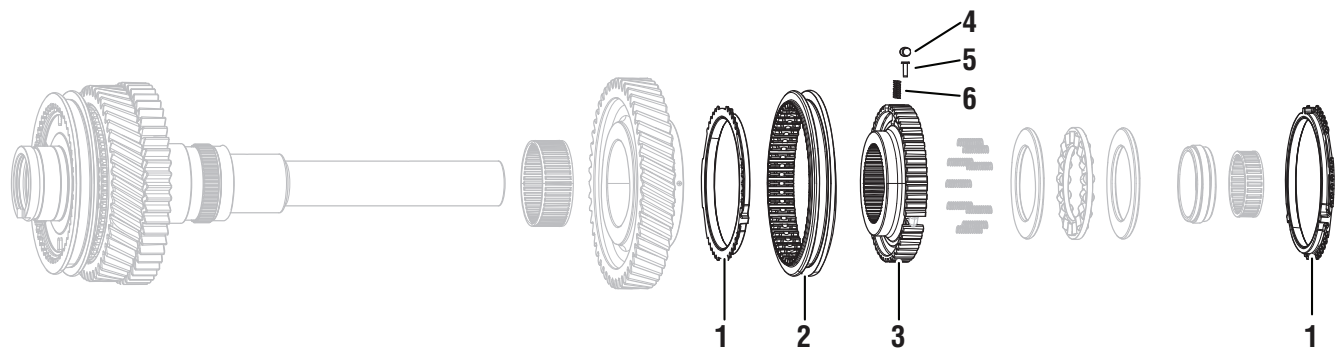
Drive Gear - Rear Small Parts Kit



K-4675

	Description	P/N	QTY		Description	P/N	QTY
1	Mainshaft Thrust Bearing	10002972	1	5	Spherical Washer	10003245	1
2	Thrust Washer	10002967	2	6	Wave Spring	10003462	1
3	Spherical Race	10004658	1	7	Clutch Hub	10003247	1
4	Needle Roller Bearing	10002977	1				

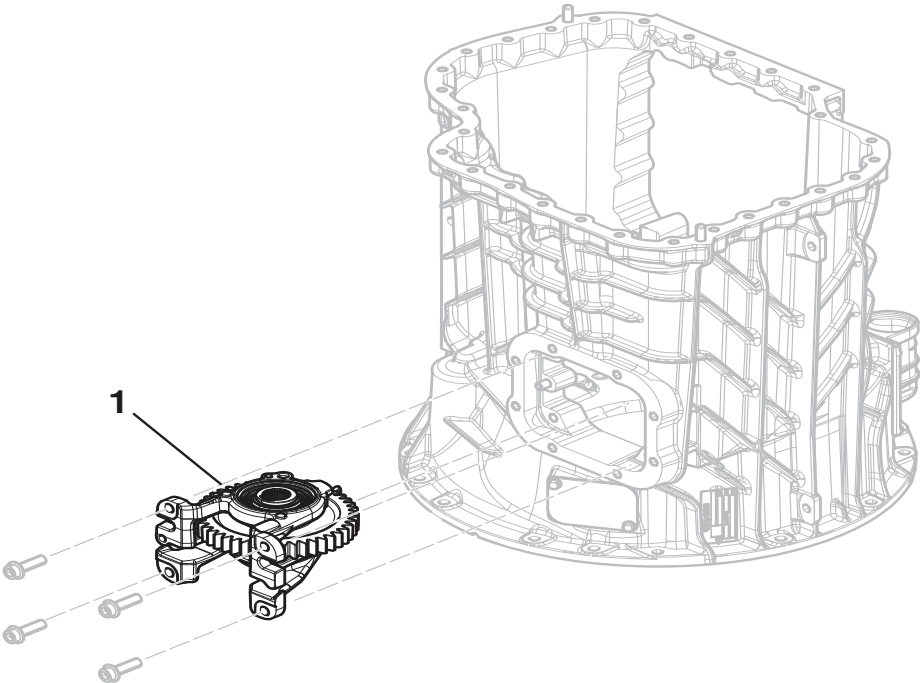
Rail B Synchronizer Parts Kit



K-4673

	Description	P/N	QTY		Description	P/N	QTY
1	Synchronizer Ring	10002550	2	4	Synchronizer Roller	10001959	3
2	Sliding Sleeve	10001942	1	5	Synchronizer Plunger	10001711	3
3	Synchronizer Hub	10004657	1	6	Compression Spring	10001710	3

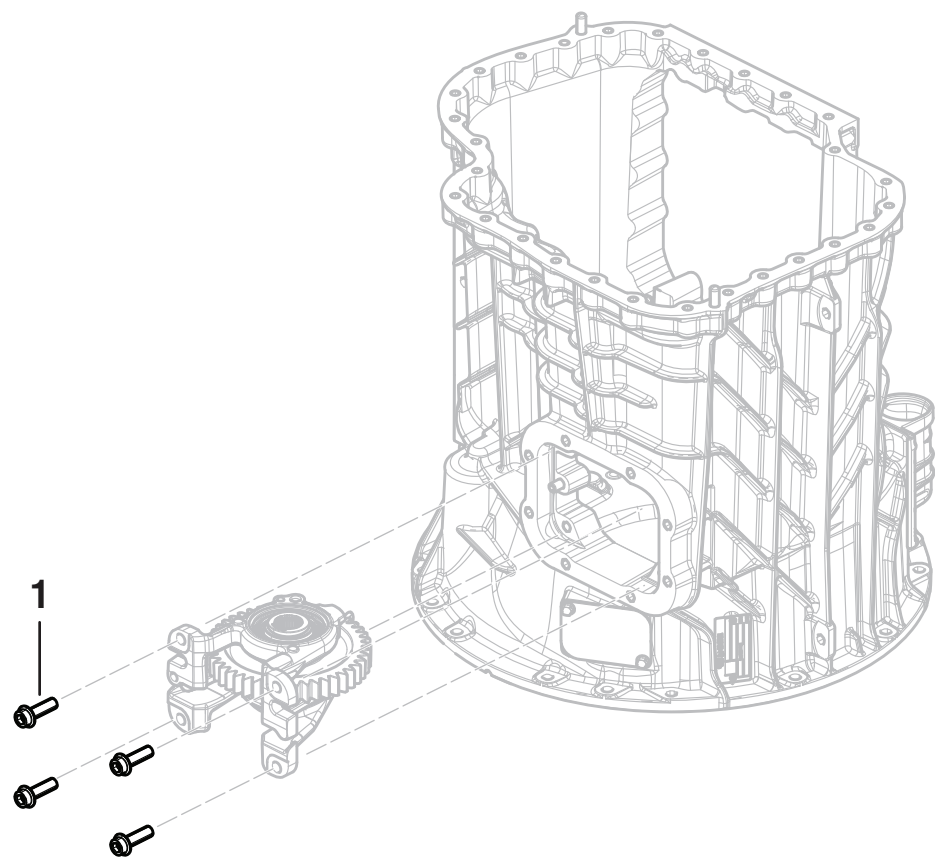
PTO Pillow Block



K-4588

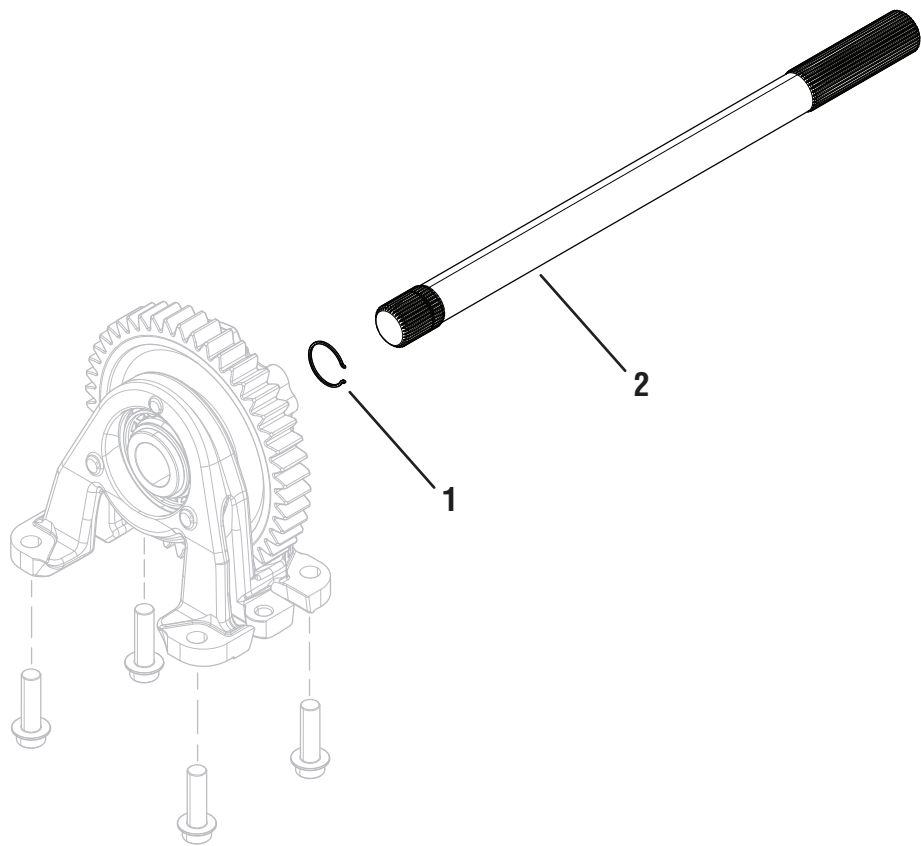
	Description	P/N	QTY
1	PTO Pillow Block Assembly	S-3255	1

PTO Pillow Block Cap Screws



	Description	P/N	QTY
1	Cap Screws (M12x1.75x40)	X-8-1213M-MP4	4

PTO Drive Shaft Kit

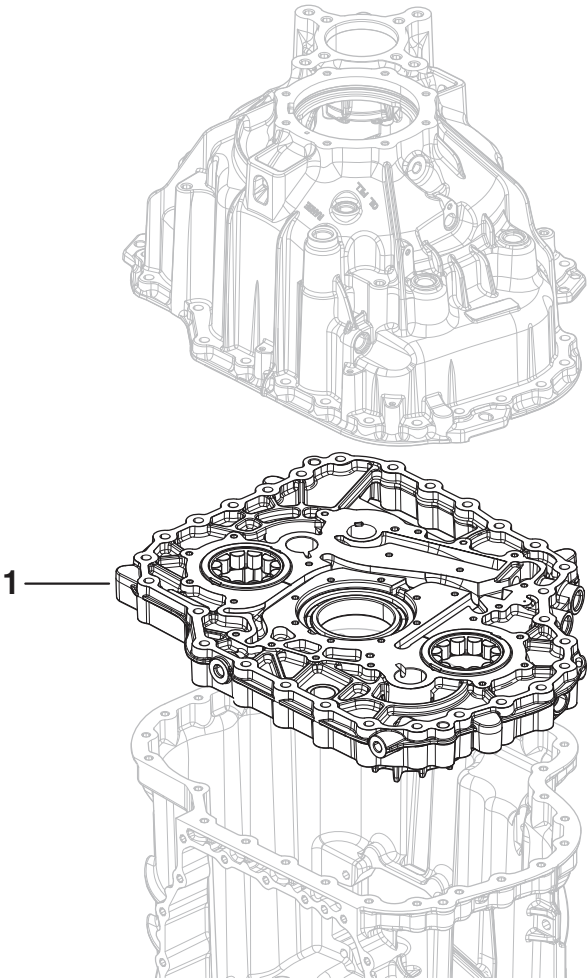


K-4589

	Description	P/N	QTY
1	Snap Ring	10003480	1
2	PTO Drive Shaft	10003318	1

Intermediate Housing Service Kits

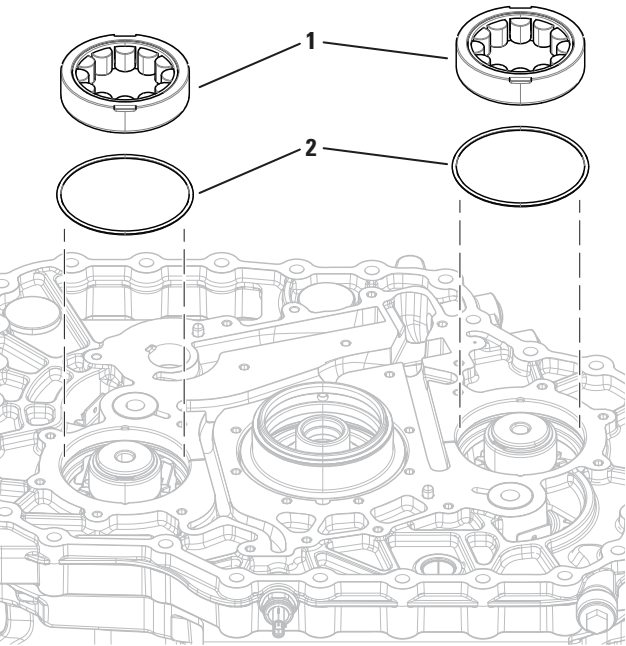
Intermediate Housing



	Description	P/N	QTY
1	Intermediate Housing	S-3258	1

Note: S-3258 comes with 10004592 Countershaft Bearings and 10004593 Intermediate Bearing installed.

Countershaft Bearing Kit

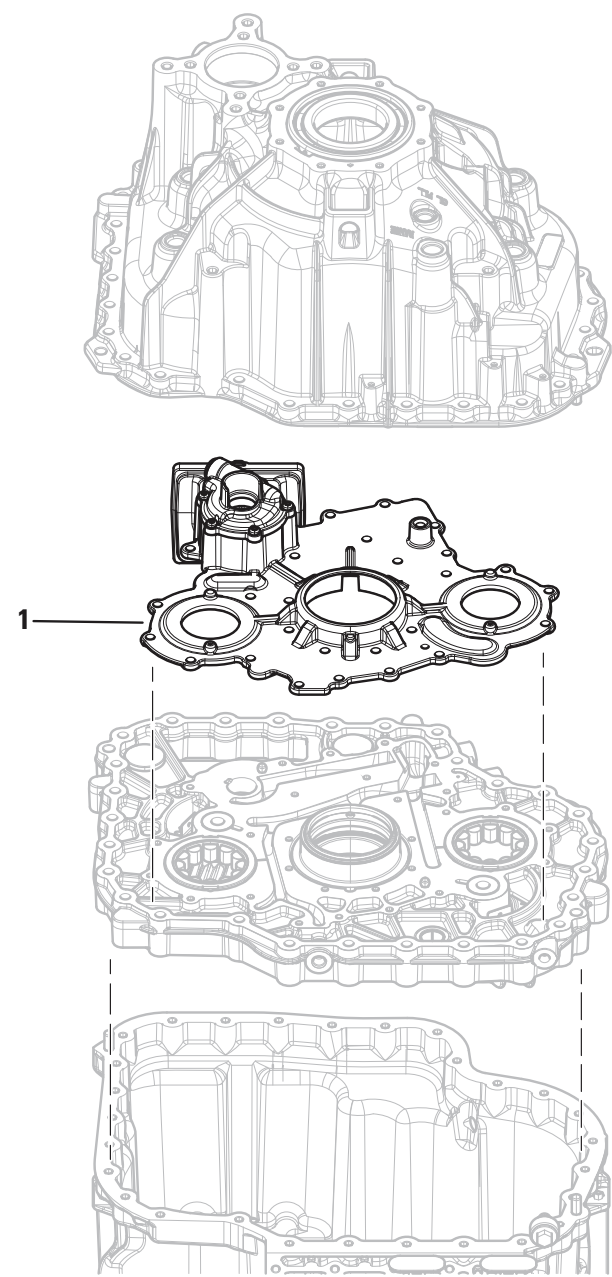


K-4584

	Description	P/N	QTY
1	Countershaft Bearings (NSS)	10004592	2
2	Countershaft Bearing O-rings	10004344	2

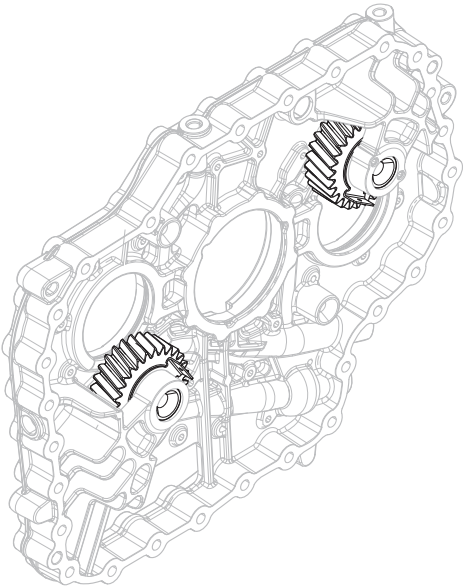
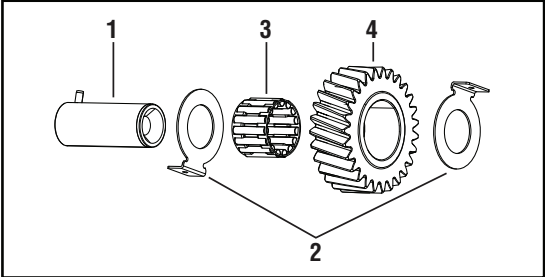
Note: Intermediate Housing and Main Housing use the same Countershaft Bearing part numbers. Reference Countershaft Bearing installation procedure for bearing orientation when pressing in new Countershaft Bearings.

Oil Pump Assembly



	Description	P/N	QTY
1	Oil Pump Assembly	A-10004610	1

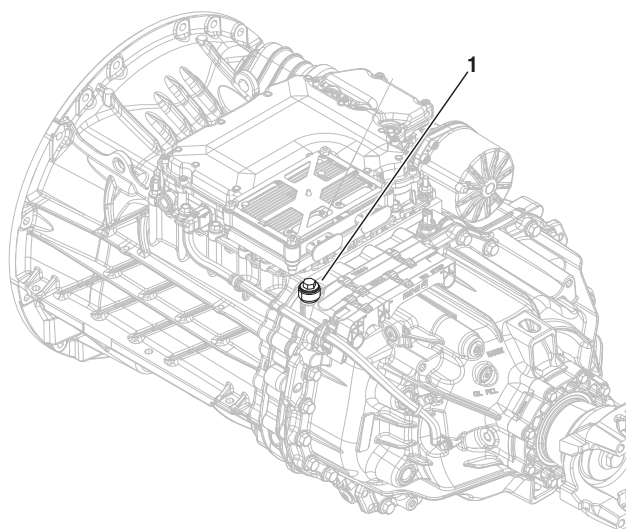
Reverse Idler Kit



K-4587

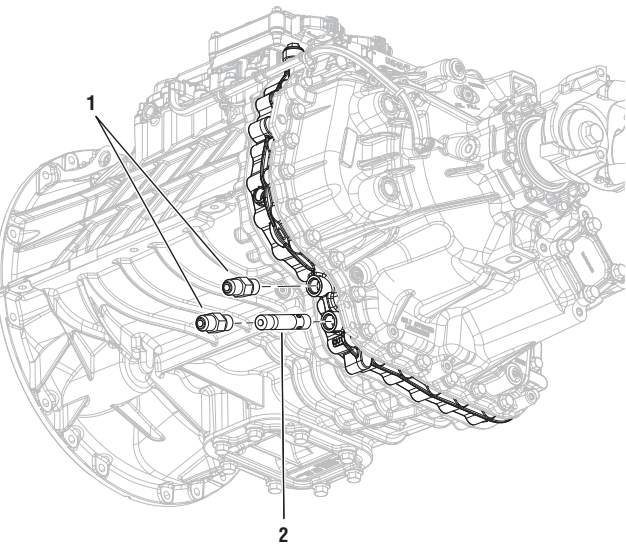
	Description	P/N	QTY
1	Reverse Idler Shaft	S-3240	2
2	Reverse Idler Thrust Washer	10003289	4
3	Reverse Idler Gear Bearing	10001013	2
4	Reverse Idler Gear	10003290	2

Breather



	Description	P/N	QTY
1	Breather	4304602	1

Oil Cooler Bypass Cartridge Kit



K-4541 (International Motors - JIC)

	Description	P/N	QTY
1	JIC Fittings M22 X 1.5 to 12	10004235	2
2	Cooler Bypass Cartridge	S-3228	1

K-4542 (DTNA - Quick Disconnect)

	Description	P/N	QTY
1	JIC Fittings M22 X 1.5 to VOSS QC	10004146	2
2	Cooler Bypass Cartridge	S-3228	1

K-4697 (DTNA - VOSS O-Ring)

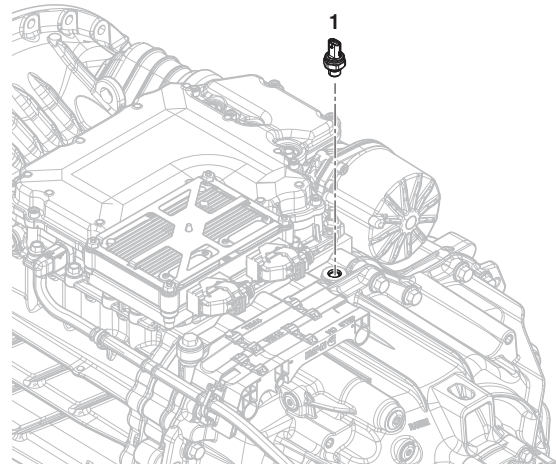
	Description	P/N	QTY
1	VOSS Fittings M22 X 1.5 to Voss	10004656	2
2	Cooler Bypass Cartridge	S-3228	1

K-4662 (PACCAR - JIC)

	Description	P/N	QTY
1	JIC Fittings M22 X 1.5 to 10	10004145	2
2	Cooler Bypass Cartridge	S-3228	1

K-4662-PAC (PACCAR - JIC)

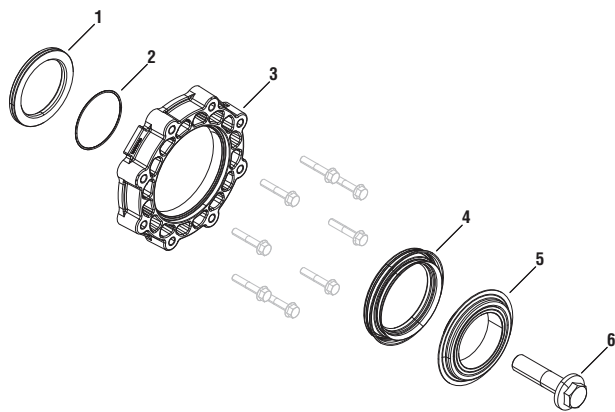
	Description	P/N	QTY
1	JIC Fittings M22 X 1.5 to 10	10004145	2
2	Cooler Bypass Cartridge	S-3228	1

Fluid Pressure Sensor Kit**K-4387**

	Description	P/N	QTY
1	Fluid Pressure Sensor	10004110	1

Rear Housing Service Parts and Kits

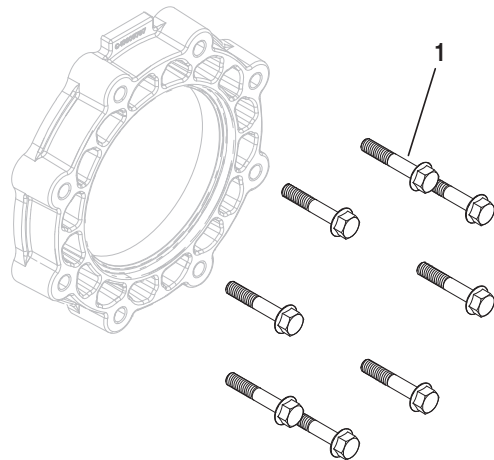
Output Seal Kit



K-4578

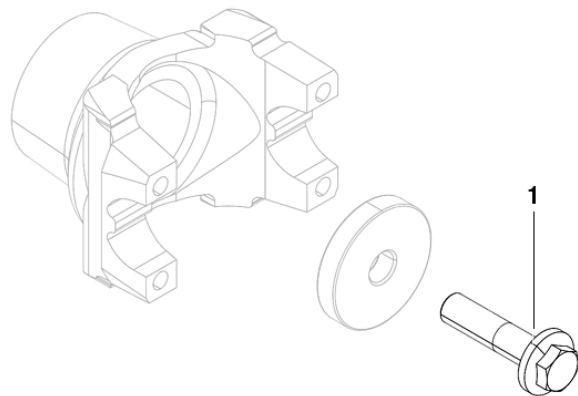
	Description	P/N	QTY
1	Thrust Washer (NSS)	10004098	1
2	O-ring (NSS)	5568511	1
3	Rear Bearing Cover (NSS)	10000798	1
4	Output Shaft Seal (NSS)	4302322	1
5	Wear Sleeve and Dust Cover (NSS)	S-3263	1
6	Output Yoke Retainer Bolt (M20x1.5x80)	10000949	1

Rear Bearing Cover Cap Screw



	Description	P/N	Qty
1	Rear Bearing Cover Cap Screw (M8X1.25X45)	10001172 -MP8	8

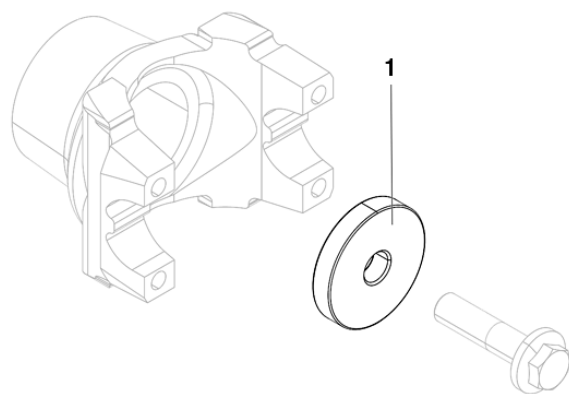
Output Yoke Retainer Bolt



WARNING: A new Retainer Bolt is required during Output Yoke installation. Failure to replace the Retainer Bolt may cause a re-used Retainer Bolt to loosen during operation and may result in major vehicle component damage, severe injury or death.

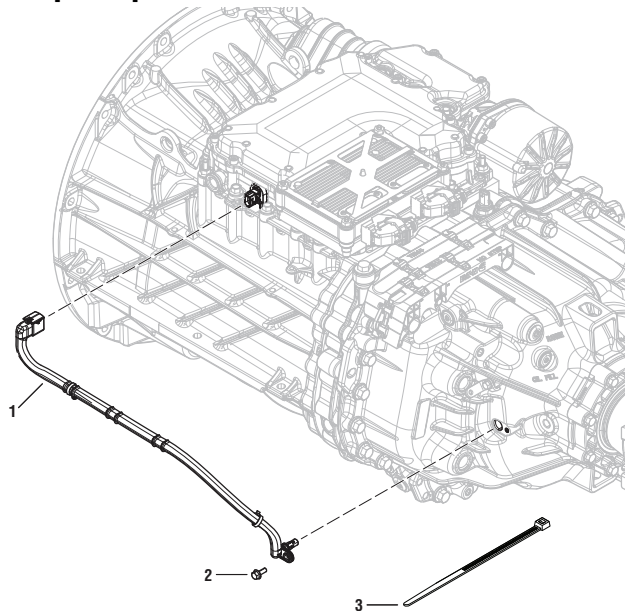
	Description	P/N	QTY
1	Output Yoke Retainer Bolt* (M20x1.5x80)	10000949	1

Output Yoke Retainer Plate



	Description	P/N	QTY
1	Retainer Plate	10000950	1

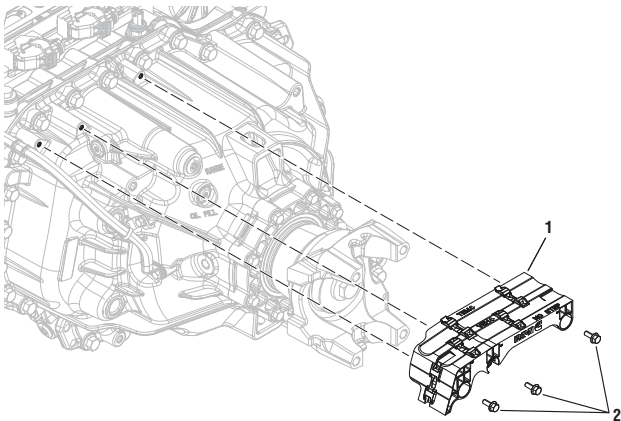
Output Speed Sensor Kit



K-4381

	Description	P/N	QTY
1	Output Speed Sensor Assembly (NSS)	10001792	1
2	Output Speed Sensor Cap Screw (M6x1.0x16)	X-8-0625M	1
3	Cable Tie	5559348	2

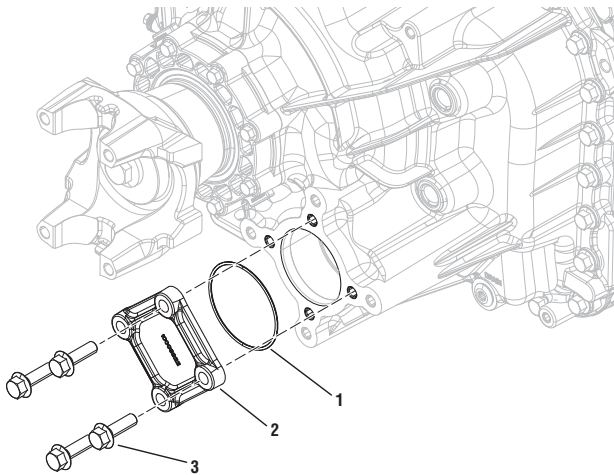
Harness Bracket Kit



K-4595

	Description	P/N	QTY
1	Harness Bracket	10003551	1
2	Harness Bracket Cap Screw (M6X1.0X16)	X-8-0625M	3

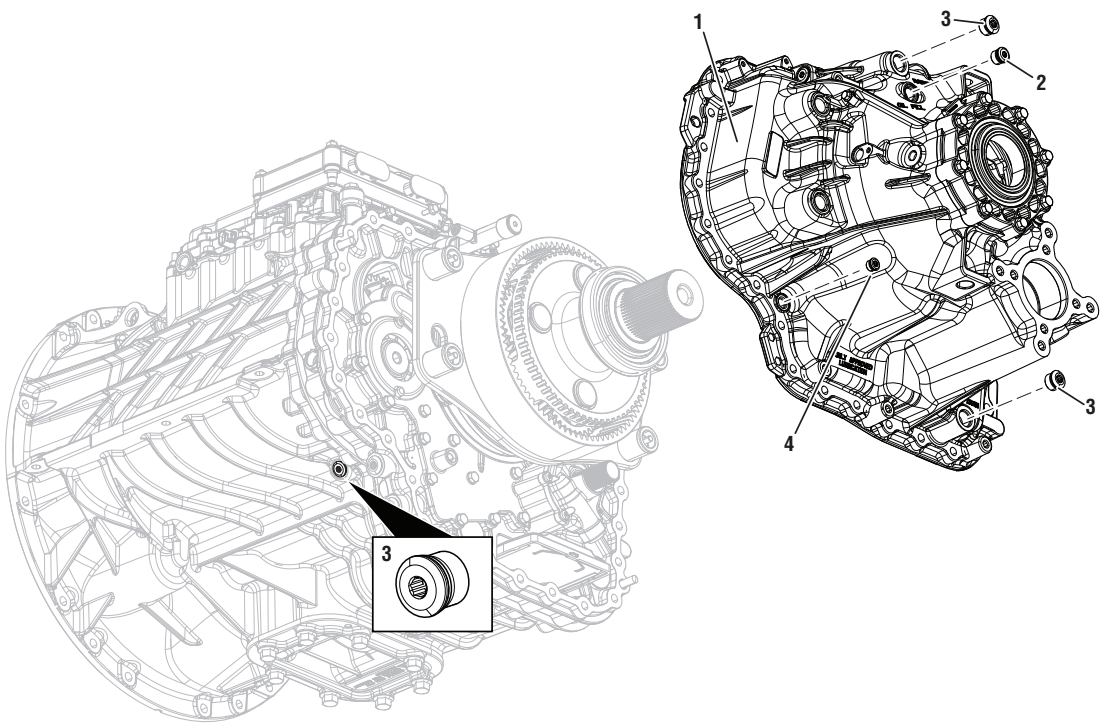
Rear PTO Cover Kit



K-4577

	Description	P/N	QTY
1	Rear PTO Cover O-ring	22467	1
2	Rear PTO Cover (NSS)	10003322	1
3	Rear PTO Cover Cap Screw (M12x1.75x40)	10001483	4

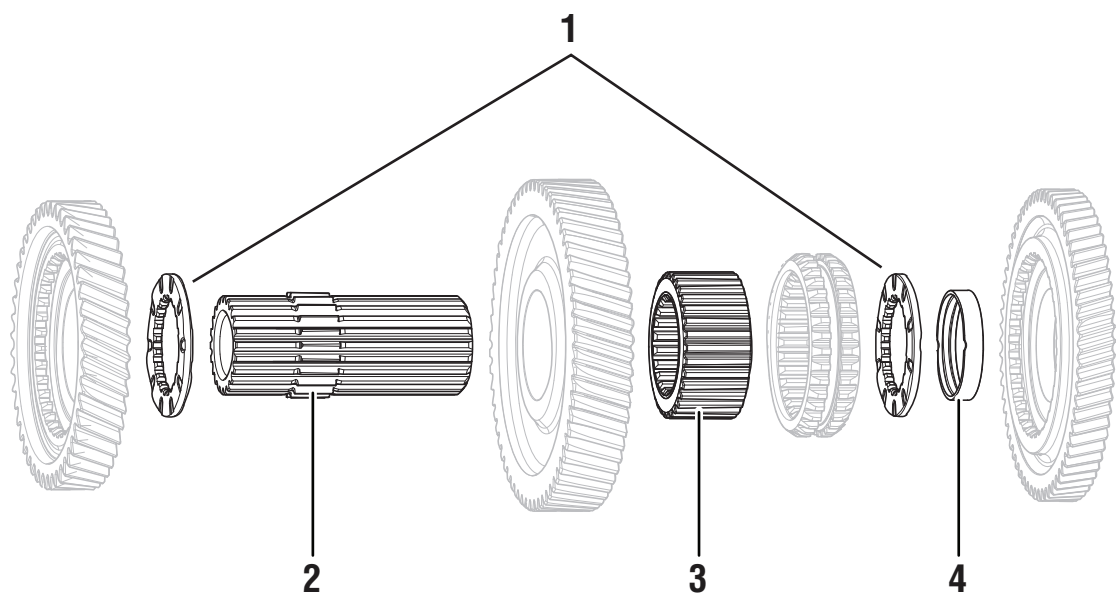
Rear Housing Kit



K-4591

	Description	P/N	QTY
1	Rear Housing Assembly and Lube Tube	S-3264	1
2	Oil Fill Plug (M18x1.5)	10004394	1
3	Oil Drain and Check Plug (M22x1.5)	10004395	2
4	4-Bolt PTO Lube Plug	4308231	1
Kit	Rear Bearing Cover/ Output Seal Kit	K-4578	1

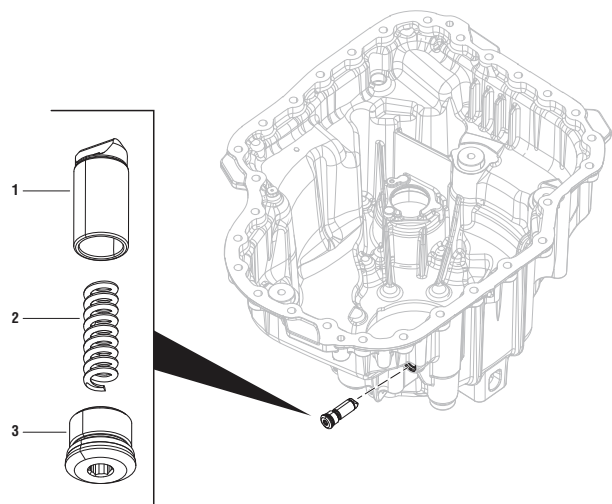
Rear Main Shaft Kit



K-4672

	Description	P/N	QTY
1	Mainshaft Washer	10003459	2
2	Mainshaft	10003256	1
3	1st Clutch Hub	10003246	1
4	Reverse Spacer	10004131	1

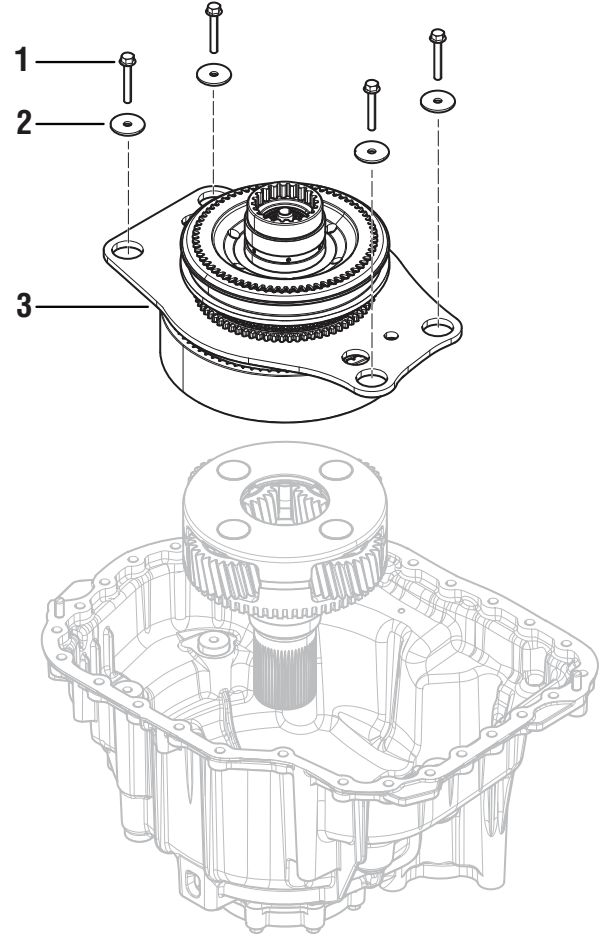
Rail E Detent Kit



K-4579

	Description	P/N	QTY
1	Rail E Detent (NSS)	10004352	1
2	Rail E Detent Spring (NSS)	10001120	1
3	Rail E Detent Plug (M18x1.5)	10004394	1

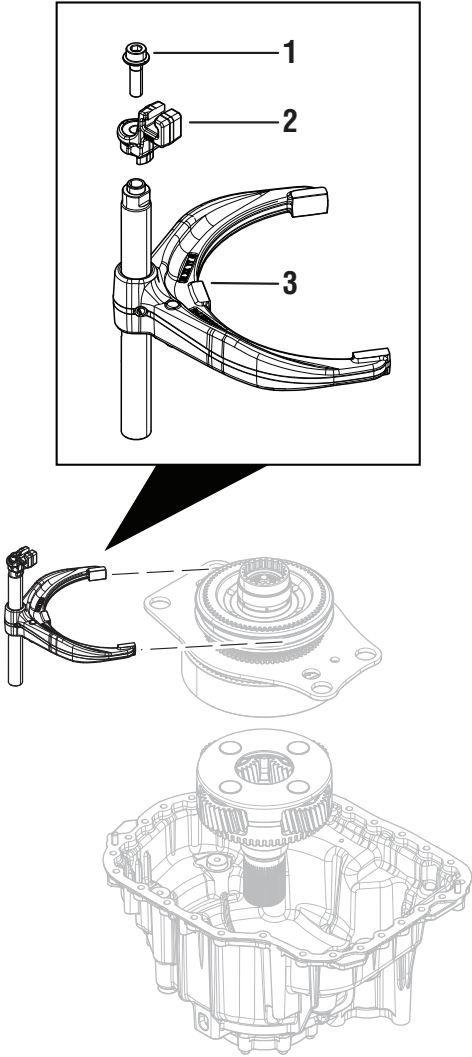
Range Synchronizer Assembly Kit



K-4580

	Description	P/N	QTY
1	Range Synchronizer Cap Screw	(M8 x 1.25 x 55) 10001167	4
2	Range Synchronizer Washer (M8)	10001168	4
3	Range Synchronizer Assembly (NSS)	S-3257	1

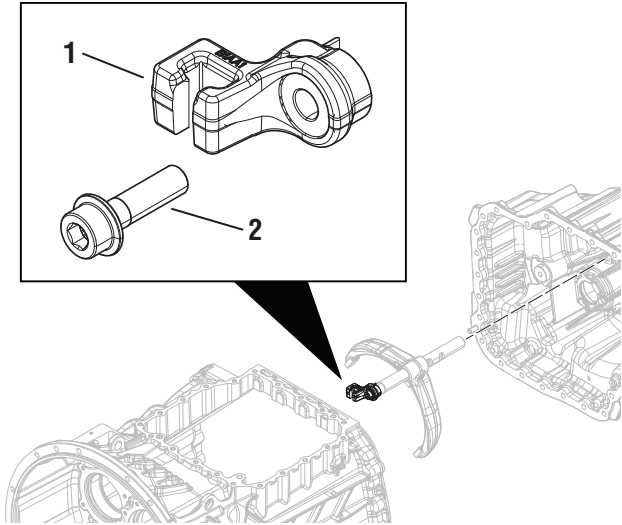
Shift Rail E (and Yoke)



K-4592

	Description	P/N	QTY
1	Cap Screw (M10 x 1.5 x 35)	10003823	1
2	Range Bar Coupler	10003488	1
3	XD Rail E Shift Fork	S-3265	1

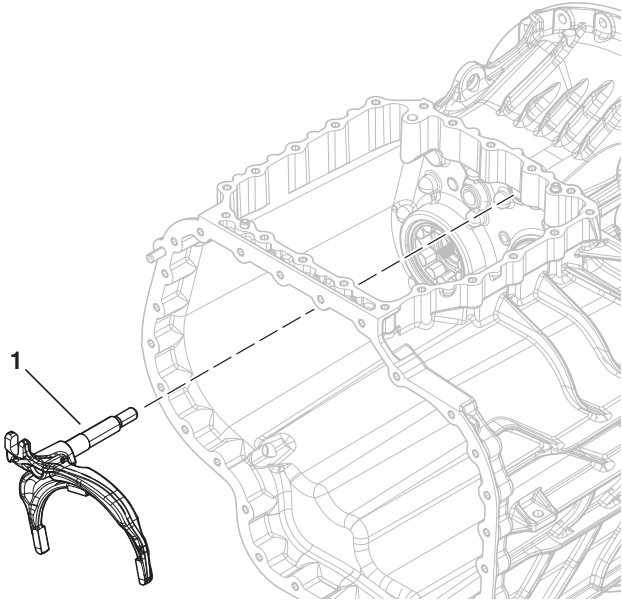
Range Bar Coupler



K-4594

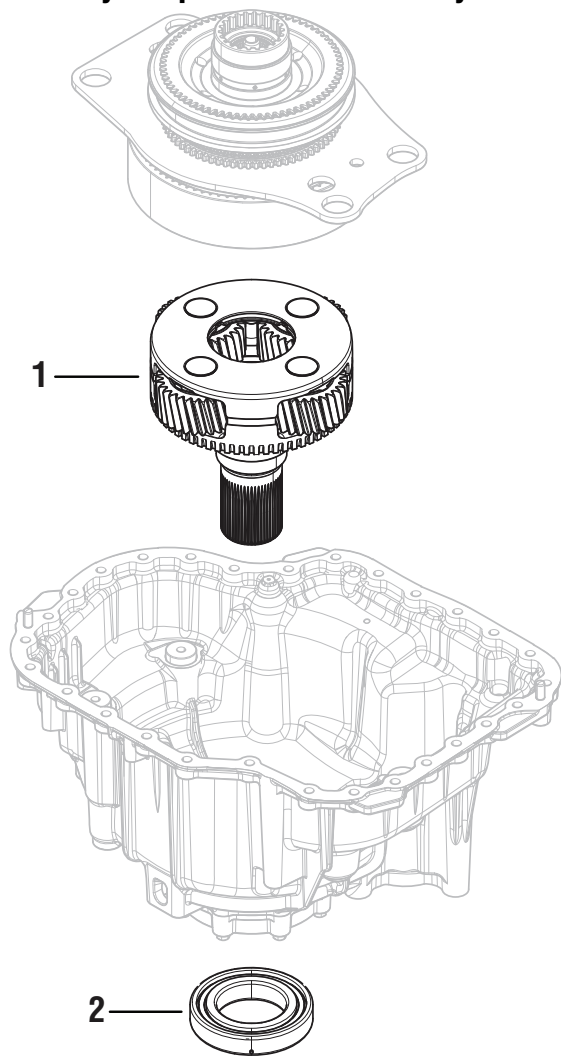
	Description	P/N	QTY
1	Range Bar Coupler	10003488	1
2	Cap Screw (M10 x 1.5 x 35)	10003823	1

S-3267



	Description	P/N	QTY
1	Rail A Shift Yoke Assembly	S-3267	1

Planetary Output Shaft Assembly



Lubricant

PS-386 XD Series Synthetic Transmission Lubricant

	Description	P/N	QTY
	1 Gallon Jug	5564546-M4	4
	5 Gallon Pail	5564543	1
	55 Gallon Drum	5564544	1

K-4593

	Description	P/N	QTY
1	Planetary Output Shaft Assembly	(NSS) S-3266	1
2	Output Bearing	10004594	1

Change Log

Date	Description
May 2025	Added PTO Pillow Block Cap Screws, Zero Leak Plugs. Updated LCA and Input Shaft kits.
April 2025	Added PTO Drive Shaft Kit
March 2025	Fixed part number on service kits index.
February 2025	Updated OEM and Engine Specific Kits. Updated Front Snap Ring Kit nomenclature.
December 2024	Updated Pilot Bearing Kits, Updated Input Shaft Kit Part Number ID Measurements
November 2024	Changes references from “Navistar” to “International Motors”
October 2024	Removed references to REMAN
August 2024	Updated Clutch Service Kits
July 2024	Updated Input Shaft Cover (NSS) Part Number. Added 10005053 Air Pressure Sensor, 10005055 MTM Top Cover Seal, 10005056 MTM Top Cover Cap Screws.
June 2024	Added Transmission REMAN Service Unit Part Numbers to OEM Kits section
May 2024	Multiple kit number changes, added cooler bypass cartridge assembly kit.
April 2024	Numerous kits added to reflect changes in TRSM0960. Changes to TCM Kits. Drive gear rear small parts kit added. Rail A Shift Yoke Assembly P/N change.
November 2023	Document Created

Copyright Eaton, 2025.

Eaton hereby grant their customers, vendors, or distributors permission to freely copy, reproduce and/or distribute this document in printed format. It may be copied only in its entirety without any changes or modifications. THIS INFORMATION IS NOT INTENDED FOR SALE OR RESALE, AND THIS NOTICE MUST REMAIN ON ALL COPIES.

Note: Features and specifications listed in this document are subject to change without notice and represent the maximum capabilities of the software and products with all options installed. Although every attempt has been made to ensure the accuracy of information contained within, Eaton makes no representation about the completeness, correctness or accuracy and assumes no responsibility for any errors or omissions. Features and functionality may vary depending on selected options.

For spec'ing or service assistance, call 1-800-826-HELP (4357) or visit www.eaton.com/roadranger. In Mexico, call 001-800-826-4357.

Roadranger: Eaton and trusted partners providing the best products and services in the industry, ensuring more time on the road.

Eaton
Vehicle Group
13100 E. Michigan Ave.
Galesburg, MI 49053 USA
800-826-HELP (4357)
www.eaton.com/roadranger

Printed in USA